

[www.kikoys-by-kasuku.com](http://www.kikoys-by-kasuku.com)



*Kasuku*  
**KASUKU™**  
Kikoy Collection



## WELCOME TO KASUKU,

A SUPERB RANGE OF EAST AFRICA'S AUTHENTIC FABRICS AND DESIGNS IN KIKOYS AND KANGAS PUT TOGETHER YET AGAIN.

*Kasuku launches a brand new collection of vibrant kikoy.*

*New colours, new designs and new fabrics..... that's what makes this latest range a 'must-have'. It takes the kikoy beyond the beach into the urban setting. From using a kikoy as a sarong to a chic scarf for a funky look with a simple blazer or pair of jeans. It adds that little bit of extra cool when meeting your friends!*

With our array of new stripes and fabulous colours, make a statement about your originality and taste.

Also new to this catalogue are Kanga towels with fun and vivid colours. Our new animal print Mara Marinis, add an exotic touch to all wardrobes.

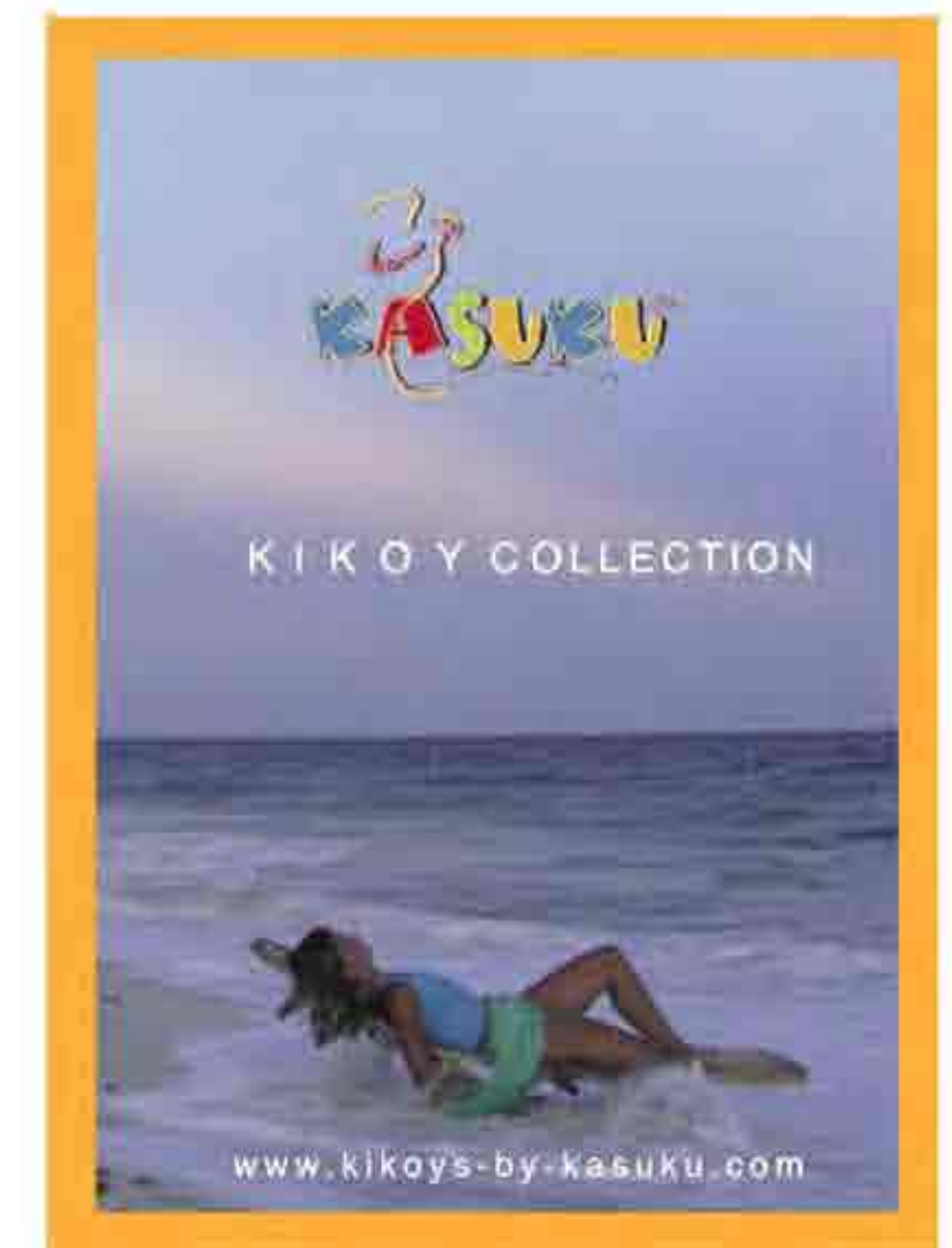
Kasuku Clothing introduces new designs that signify casual comfort wherever you are; holiday, home, office, shopping.

We hope you will get pleasure from using Kasuku Products which are known and worn worldwide from Benin to Barbados, from Berlin to Bali. Our superior kikoy fabric is preferred by those who know and understand kikoy and our offering of an inexhaustible colour range will never leave you without choice.

This catalogue serves in addition to our last catalogue. *See, Buy and Try the Kikoy!*

Kasuku's factory in Kenya is a member of Kenya Federation for Alternative Trade (KEFAT).

KEFAT promote social justice in trade and economic development. The Federation was established, to create a national forum within which Fair Trade stakeholders in Kenya can collectively be involved in sharing of experiences and pressing for their mutual socio-economic concerns.



*The crochet motifs found in Kasuku Clothing are made by a "collective" group of women in Kenya. The profit made from this work is used to support their children in paying school fees, buying books and uniform. At the same time, they teach their girls to crochet, developing a past time and keeping the girls occupied.*





## KIKOYS

- Swara
- Kongoni
- Kifaru
- Ndovu
- Chui



2 - 11



12 - 13

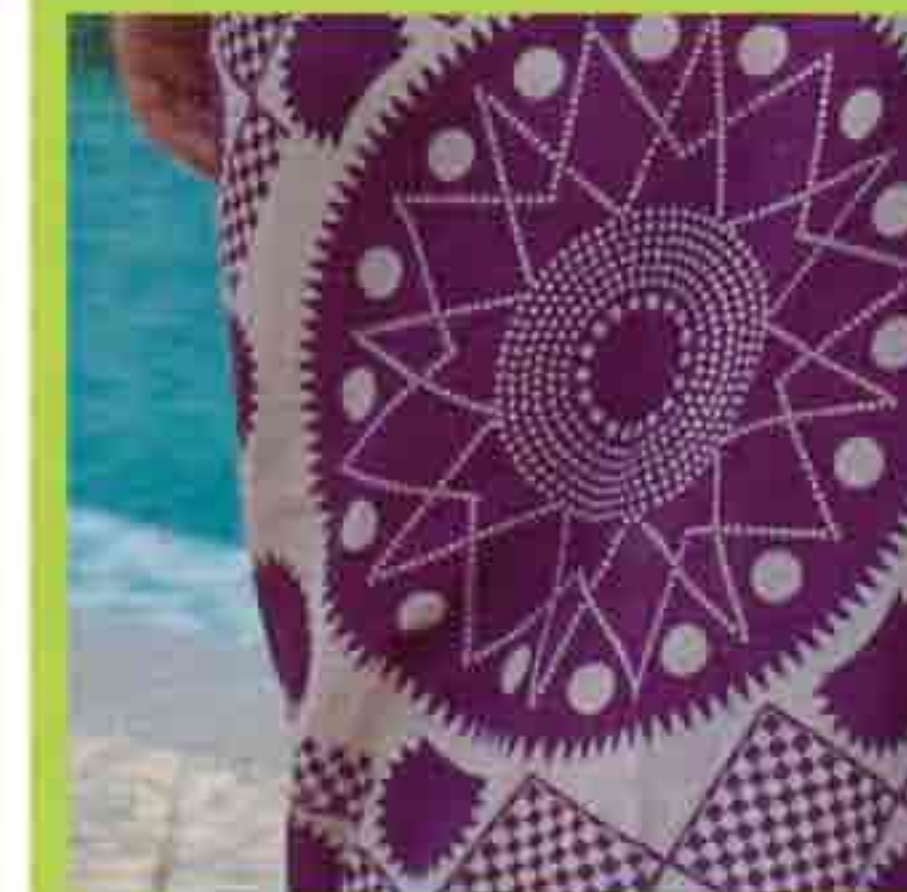
## KIKOY LAINI

## MARINIS

- Marikoy Swara
- Marikoy Punda-Milia
- Plain Marini
- Two tone Marini
- Marikoy Kongoni
- Beaded Clasps
- Mara Marini



14 - 21



22 - 25

## KANGAS

- Peacock
- Star
- Flower

## TOWELS

- Kikoys
- Kangas



26 - 29



30 - 34

## CLOTHING

- Mrembo Kaftan
- Kengele Top
- Johari Dress
- Mrefu Dress
- Karibu Kaftan
- Salama Skirt
- Furaha Skirt
- Culottes
- Maisha Dress

## CLASPS



35



36 - 37

## SAFARI

- Kikoys
- Marikoy
- Towels
- Clothing

# CONTENTS

GENERAL INFORMATION AND SIZE GUIDE (PG 38)





## **Kikoy**

A large range of Kikoy in the traditional design feature in this catalogue along with new patterns with narrow and wide stripes, larger borders and fabulous new colours. This new collection is varied and suitable for all tastes due to the unrivalled choice of designs and colour combinations. The uses of a kikoy remain numerous, moving on from a beach sarong to an urban accessory. Kasuku continues delivering the enhanced quality kikoy made from 100% mercerised cotton. Worn by all ages, the Kikoy culture is not just a fad but has now become an essential part of one's attire.

*Size of all kikoy: 104 x 174 cms (including fringes)*





## Swara Kikoy

New colours add a new dimension to this very popular design



# SWARA





## Kongoni Kikoy

The prominent border remains the main feature of Kongoni Kikoy.

Bold traditional colours mixed with colours of the seas gives way to another great array of colour combinations.







KWR01\_MK254



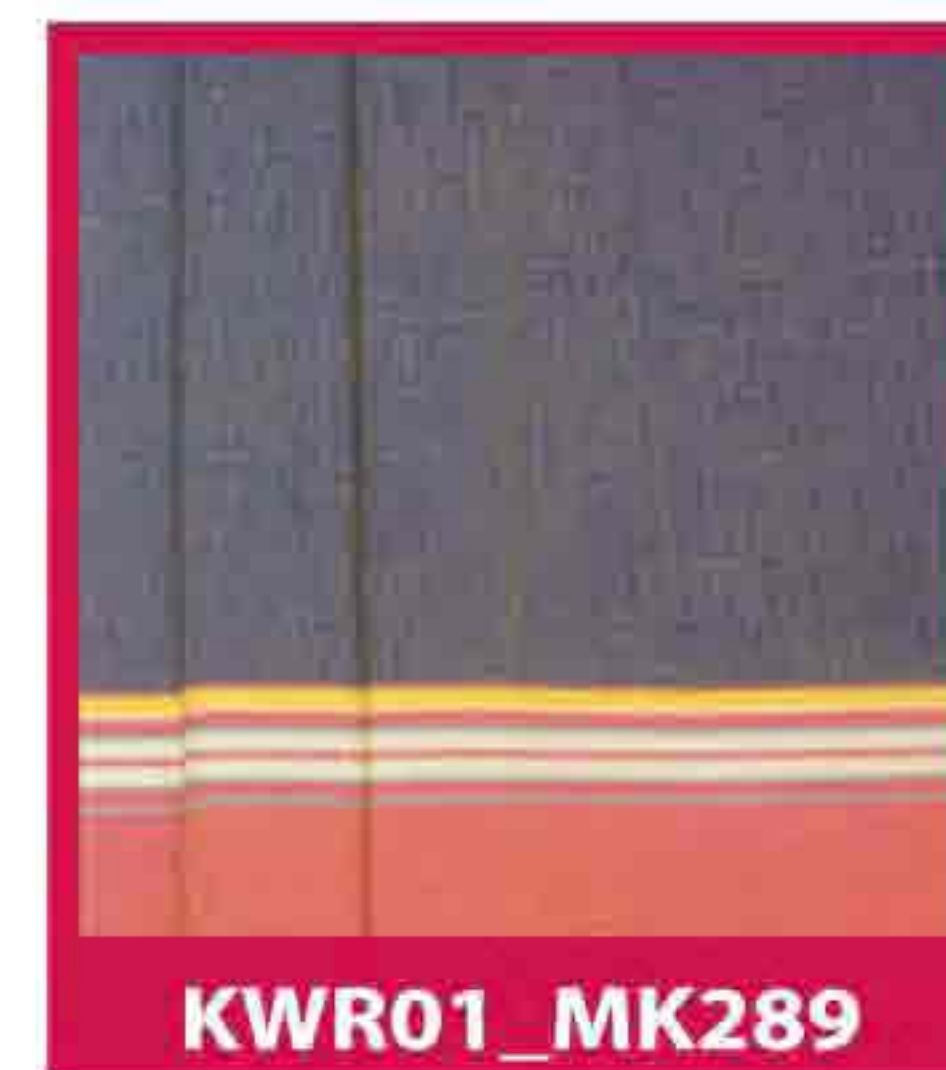
KWR01\_MK295



KWR01\_MK288



KWR01\_MK287



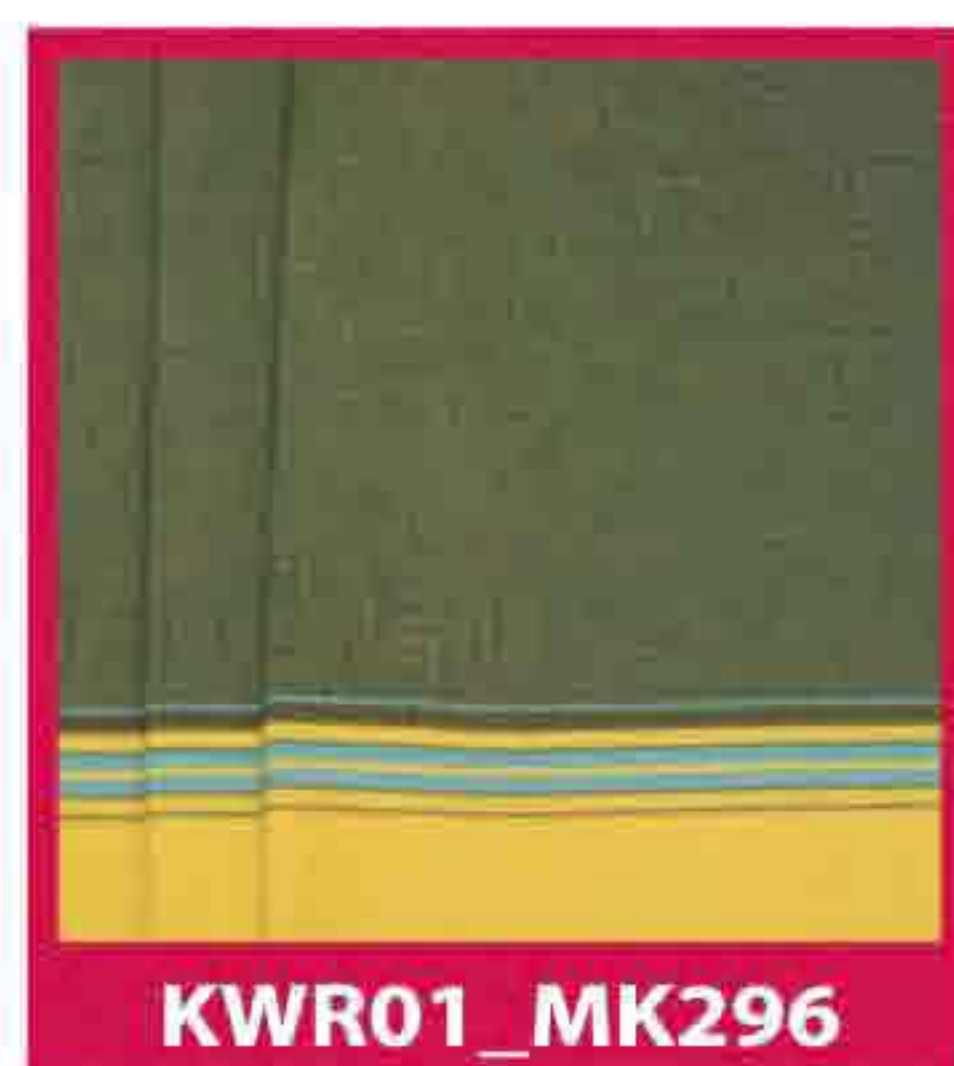
KWR01\_MK289



KWR01\_MK340/25



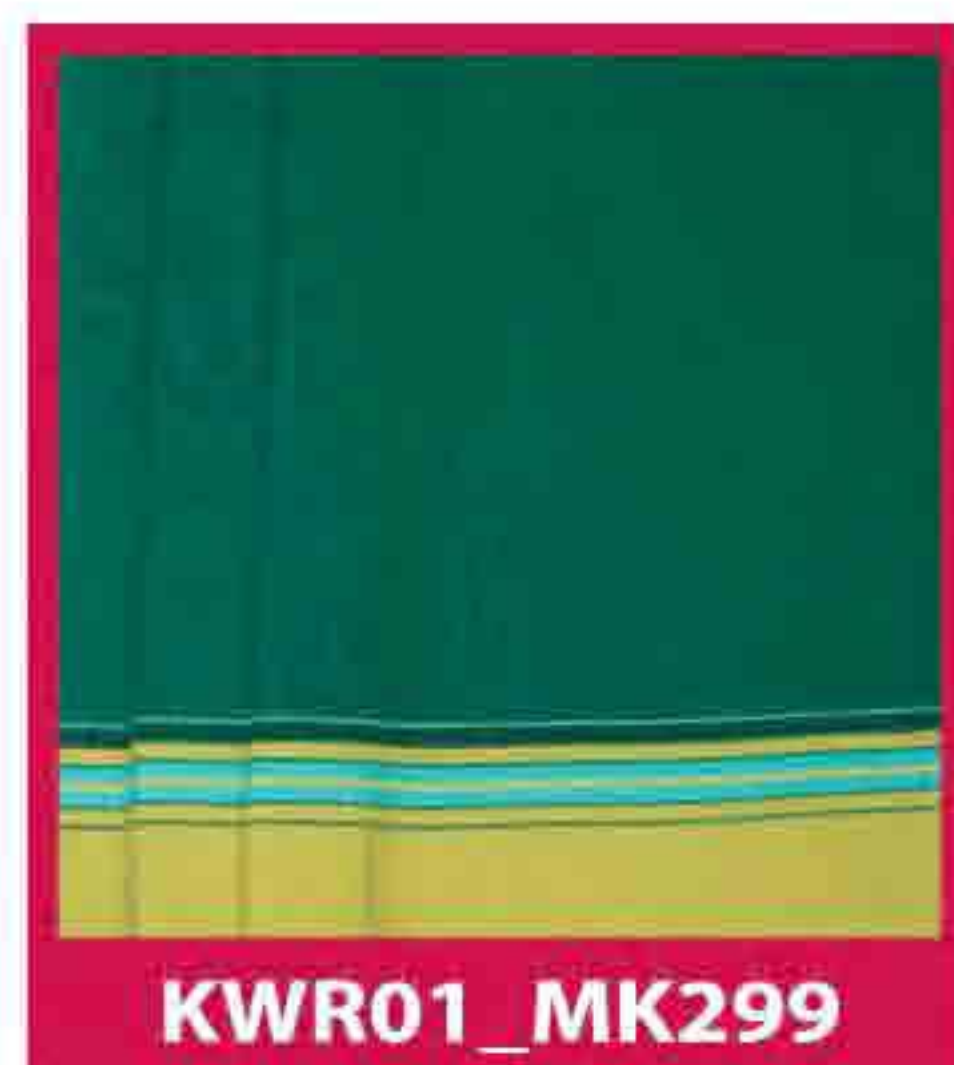
KWR01\_MK284



KWR01\_MK296



KWR01\_MK249



KWR01\_MK299



KWR01\_MK282



KWR01\_MK300

### Kongoni Kikoy – White border range

White borders with pastel colours give these new Kongoni Kikoy almost an iridescent effect. Colours that would match with almost all casual clothing or beachwear makes this collection very handy.

1. KWR01\_MK358/3
2. KWR01\_MK360/3
3. KWR01\_MK361/3
4. KWR01\_MK359/3
5. KWR01\_MK362/3
6. KWR01\_MK363/3



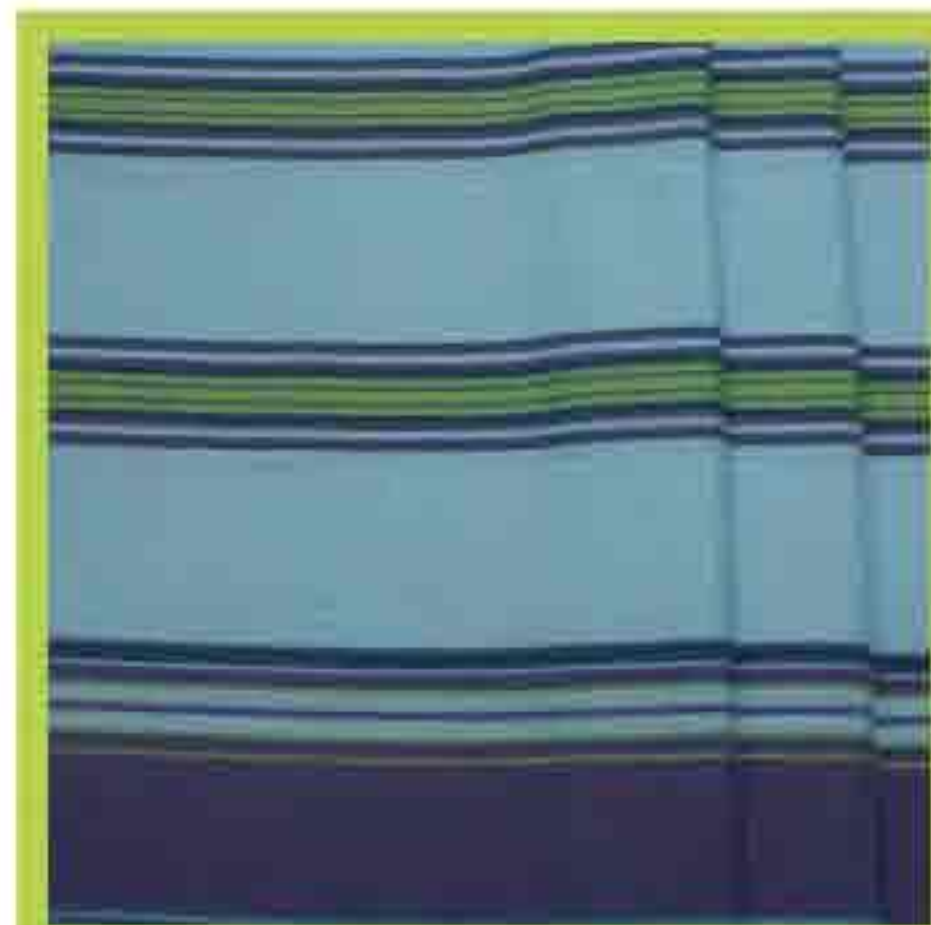




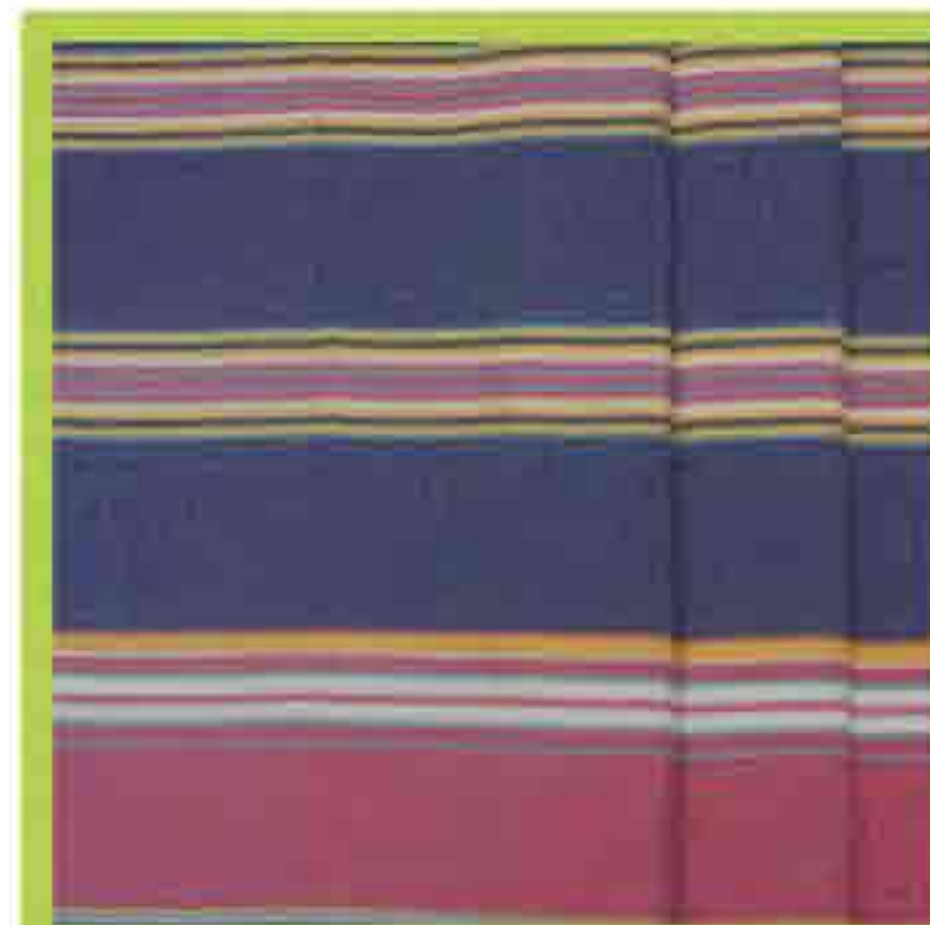




KWR01\_MKS254



KWR01\_MKS284



KWR01\_MKS249



KWR01\_MKS282



KWR01\_MKS295



KWR01\_MKS296



KWR01\_MKS299



KWR01\_MKS300



KWR01\_MKS288



KWR01\_MKS287



KWR01\_MKS289



KWR01\_MKS340/25



### Kifar kikoy

Narrow and wide stripes running across the kikoy are distinctive to Kifar Kikoys. Another time honoured design presented in a combination of traditional and modern colours.





## Ndovu Kikoy

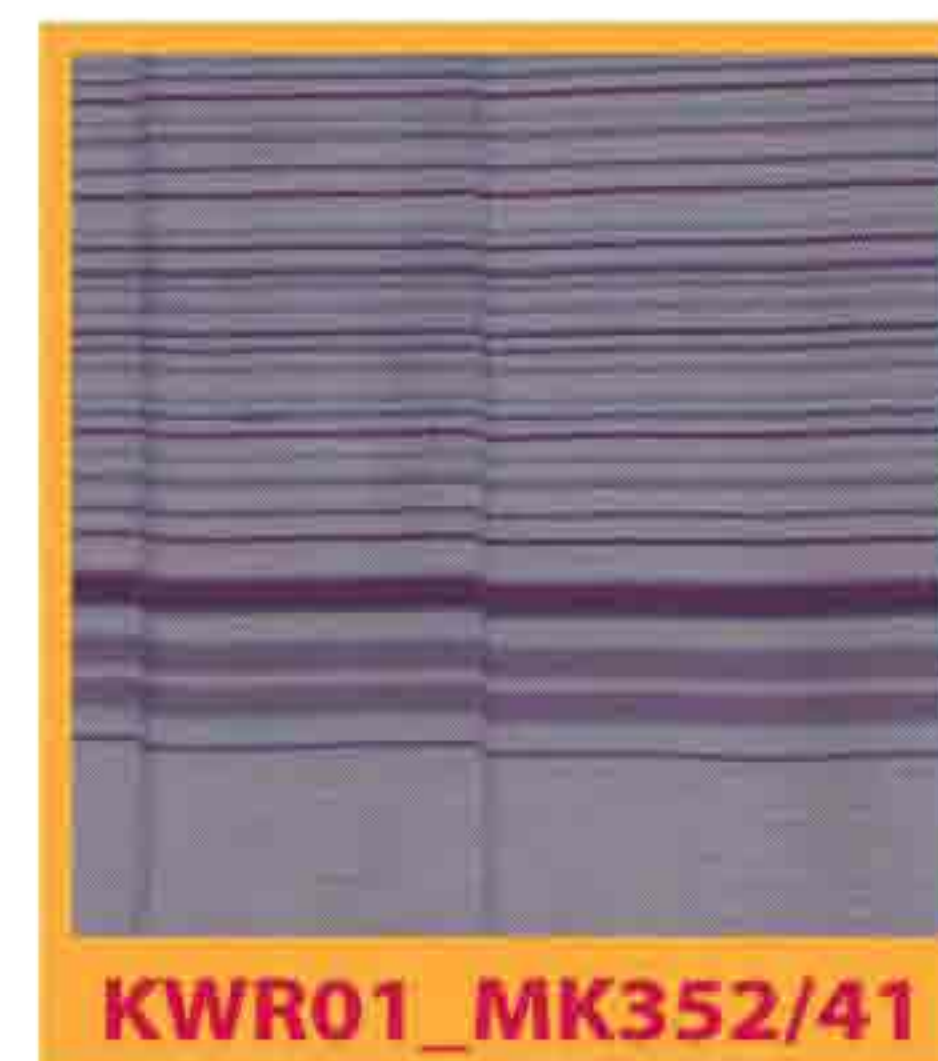
Ndovu Kikoy feature a novel pattern in narrow stripes reflecting the traditional kikoy borders with symmetrical all over stripes. A generous choice of colours is offered to suit all tastes.



KWR01\_MK352/3



KWR01\_MK352/48



KWR01\_MK352/41



KWR01\_MK353/27



KWR01\_MK353/3



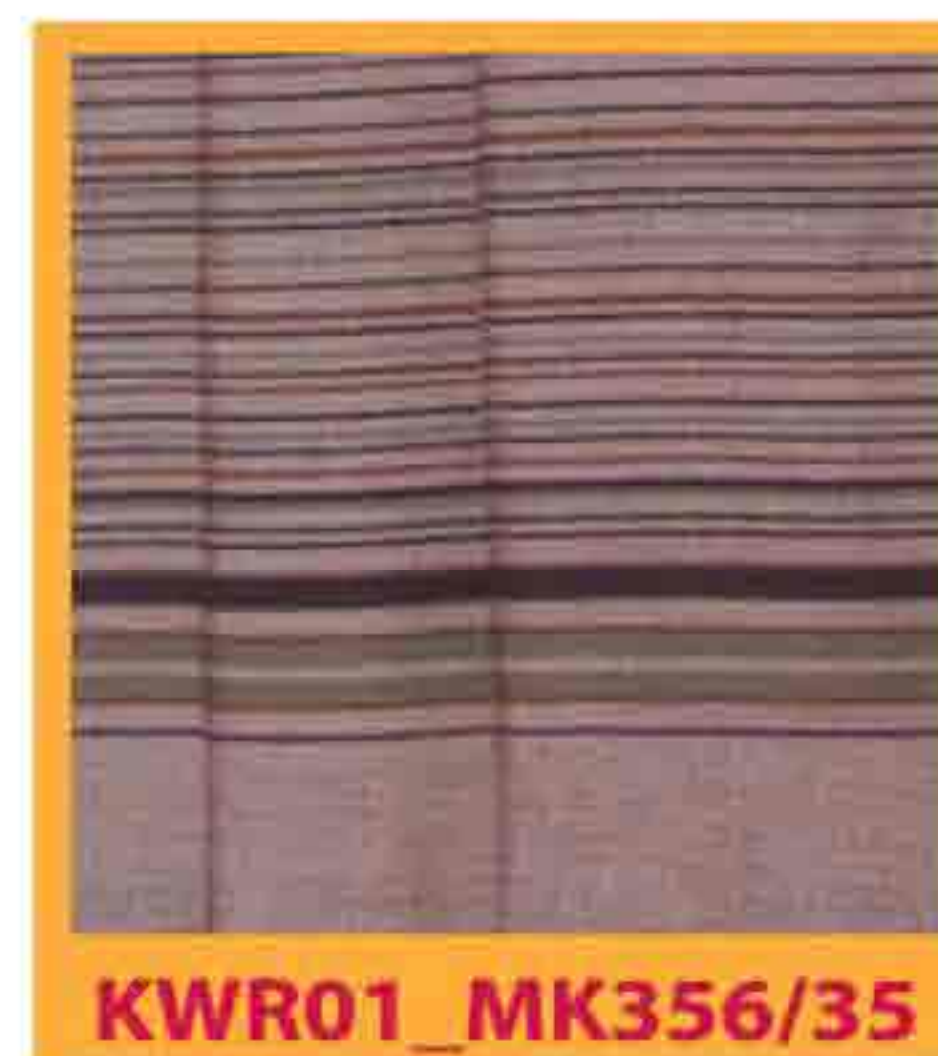
KWR01\_MK354/44



KWR01\_MK354/3



KWR01\_MK355/27



KWR01\_MK356/35



KWR01\_MK357/29





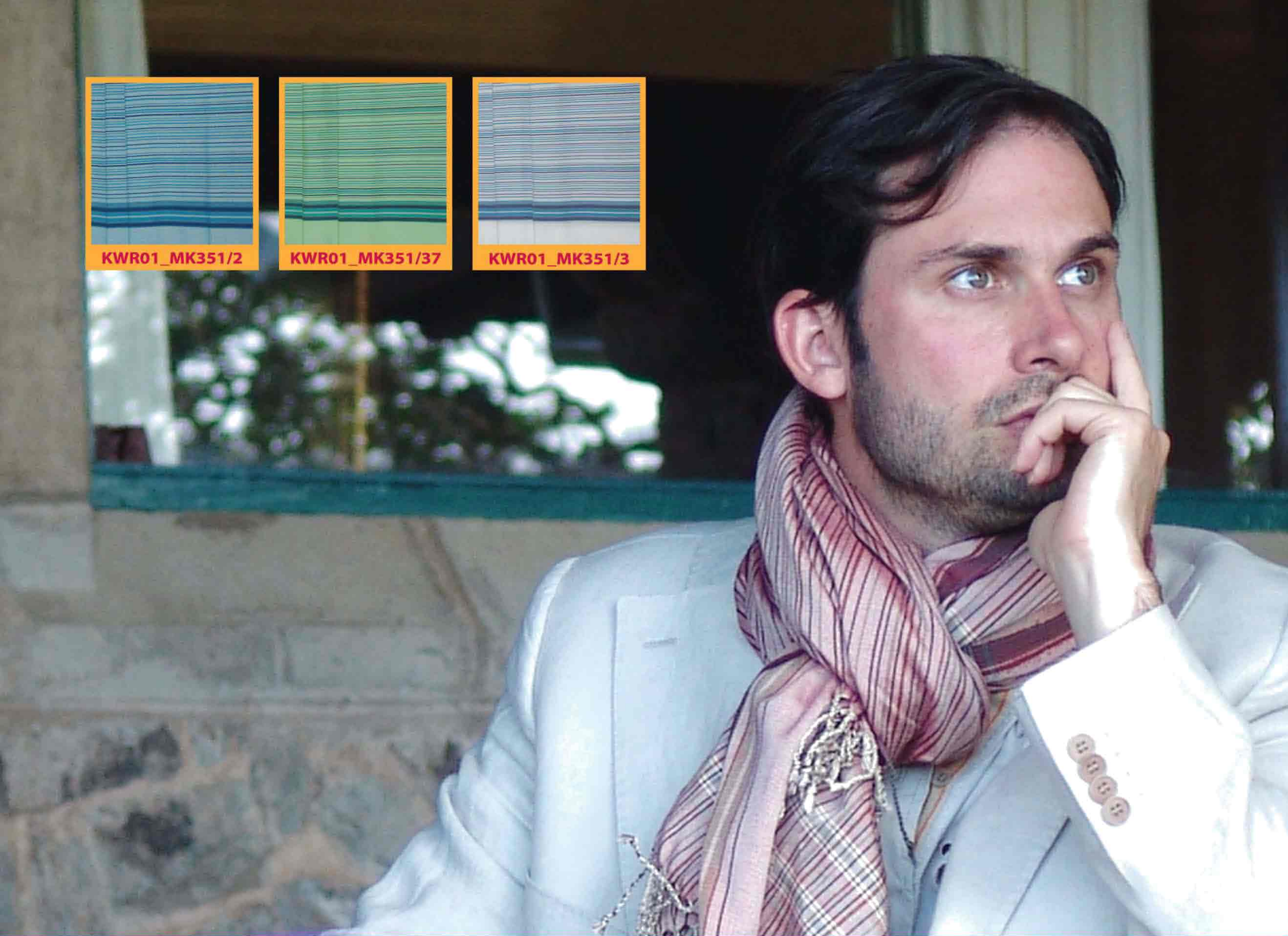
KWR01\_MK351/2



KWR01\_MK351/37



KWR01\_MK351/3



INDOVU



1 KWR01\_MK 348/3

2 KWR01\_MK 348/27

3 KWR01\_MK 349/3

4 KWR01\_MK 349/44

5 KWR01\_MK365/3

6 KWR01\_MK366/12

7 KWR01\_MK364/3

8 KWR01\_MK366/39

9 KWR01\_MK365/2

10 KWR01\_MK365/18





### Chui Kikoy

The new Chui Kikoy with broader borders are inspired by calm oceans and sunsets, offering pastel colours with stylish sophistication.

# CHUI





## Laini Kikoys

New to the Kasuku Collection are Laini Kikoys. 100% cotton, the texture of these kikoy is lighter than the original kikoy and slightly thicker than the Marinis. Soft and supple with varying designs and colours, Laini Kikoys are fast moving and ever changing. Check out our website for current designs.

Size: 110cm by 195cm (Including fringes)



1. SK011/3
2. SK013/10
3. SK015/39
4. SK016/3
5. SK013/43
6. SK012/3
7. SK002/2
8. SK006/41
9. SK012/5
10. SK013/37
11. SK014/5





12. SK012/43

13. SK013/19

14. SK012/2

15. SK011/48

16. SK006/37

17. SK012/48

18. SK003/19



KIKOY LAINI





## **Marini**

The Marini fabric is light and very versatile. Made from 100% cotton, Marini wraps are extremely cool to wear and as their Swahili name suggests, attractive & elegant, fresh & fashionable.

Sarong, scarf, bikini top, skirt, belt are some of the uses of Kasuku's Marini Collection. Besides the considerable choice of colours in the Plain and Two-Tone, the Marikoy colour range in Kongoni, Punda Milia and Swara has also extended.

With the new printed Marinis called Mara Marinis and the Plain Marinis with a beaded clasp, Kasuku continues offering new products and new designs.



**Marikoy - Swara**



**KWR11\_FK334/3**



**KWR11\_FK334/25**



**KWR11\_FK332/3**

**Marikoy – Swara (Above)**

Being sexy is fun – That's what Swara Marikoys portray. Sun and water colours are reflected in the graduating shades within the stripes creating sensational sunset and deep sea effect.

*Size 110 x 180 cms (including fringes)*

**Marikoy – Punda Milia (Right)**

The inspiration behind this range of Marikoys is the gorgeous zebras walking East Africa's famous plains during varying times of the day with different light rays shining on them. Punda Milia Marikoys make stunning scarves or sarongs for both men and women.

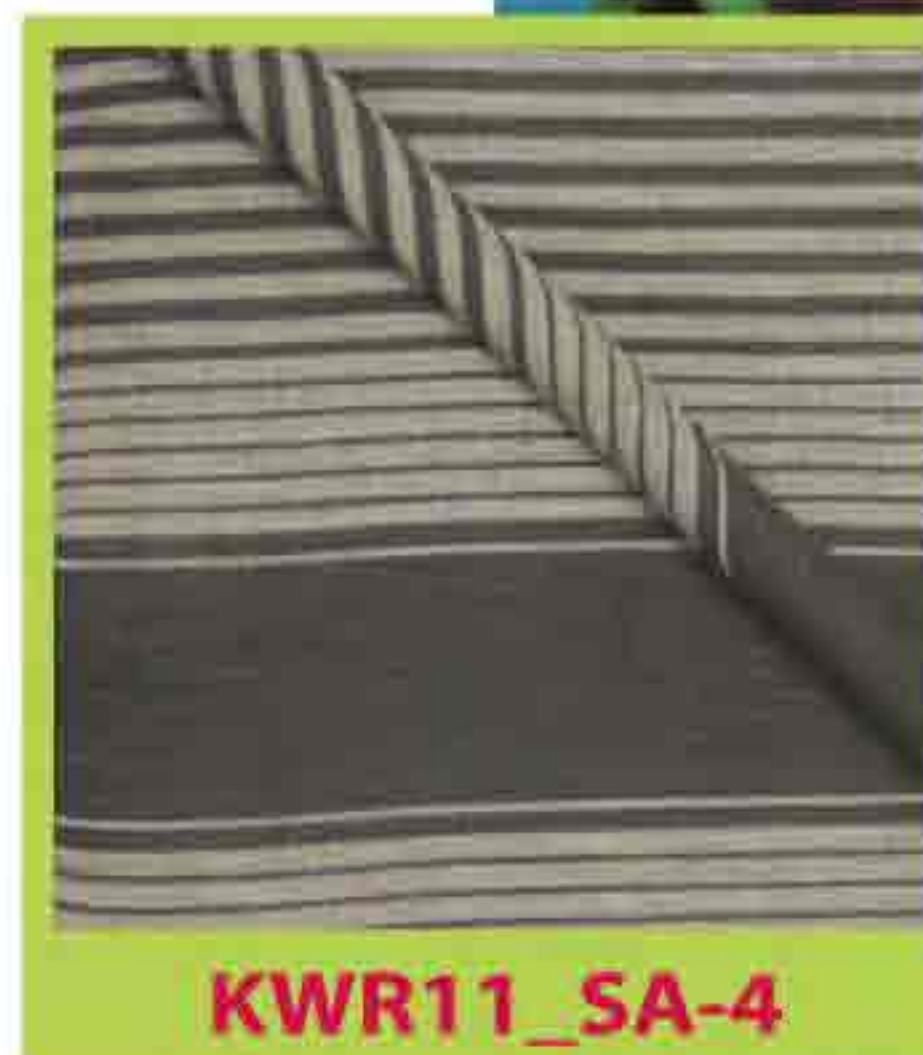
*Size 110 x 180 cms (including fringes)*



**Marikoy-Punda Milia**  
**KWR11\_SC-6**



**KWR11\_SA-3**



**KWR11\_SA-4**



**KWR11\_SC-7**



**KWR11\_SC-1**



**KWR11\_SB-3**



**KWR11\_SB-4**



**MARIKOY**



KWR09\_P50



KWR09\_P45



KWR09\_P40



KWR09\_P28



KWR09\_P11



KWR09\_P44



## Plain Marini

The plain colours make this Marini truly versatile when it comes to the different colour combinations and designs that it can be worn with. It never goes out of fashion and remains handy and valuable forever.

Size: 107 x 180 cms (including fringes)

KWR09\_P1



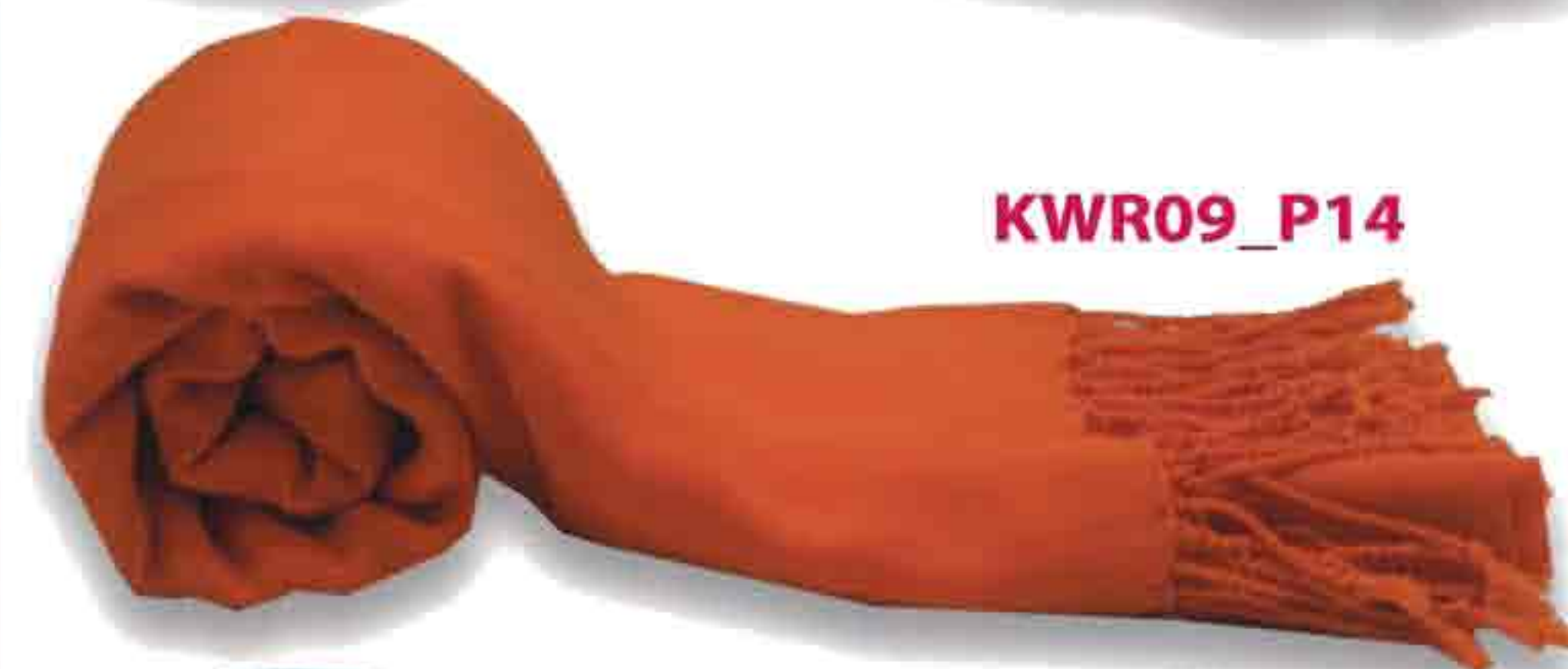
KWR09\_P6



KWR09\_P8



KWR09\_P14



KWR09\_P15



KWR09\_P21



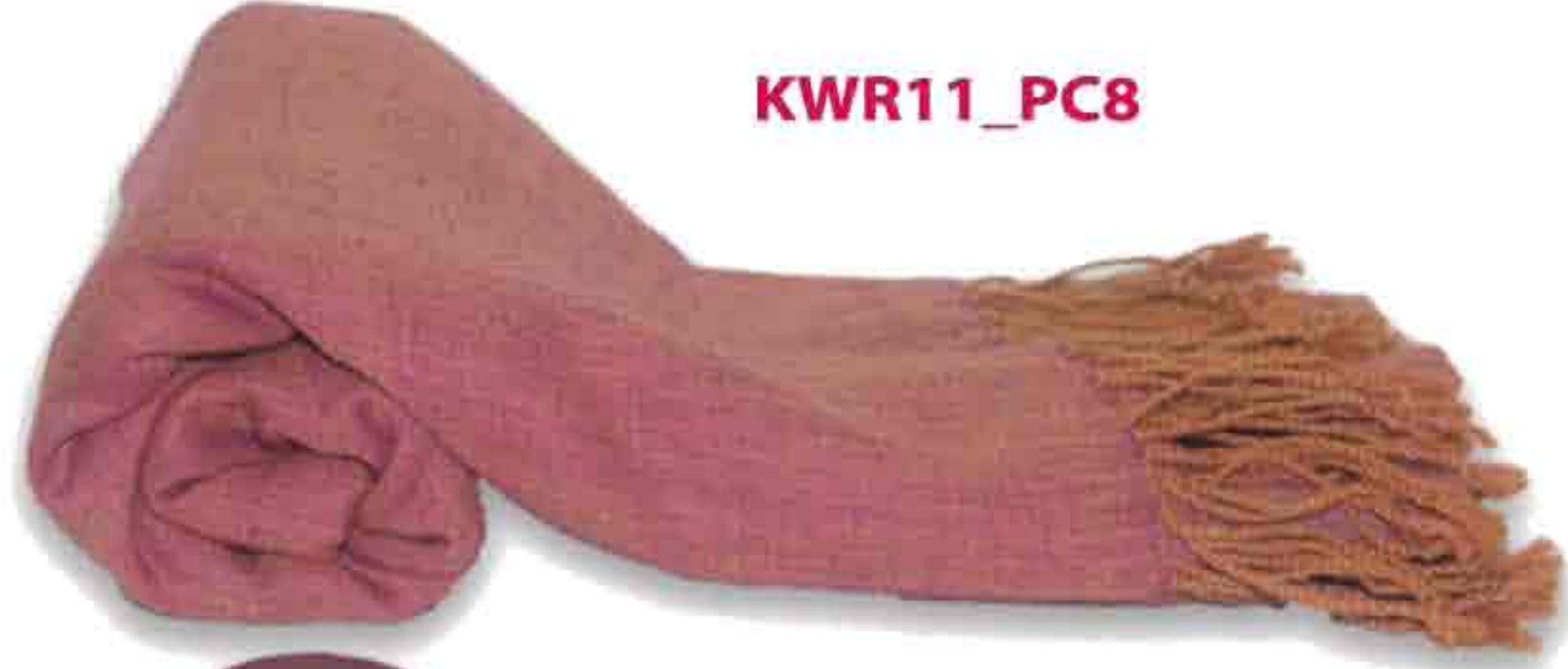


# TWO TONE MARINI

KWR11\_PB2



KWR11\_PC8



KWR11\_PE37



KWR11\_PB5



KWR11\_PD7



KWR11\_PE40



KWR11\_PC3



KWR11\_PD11



KWR11\_PE41



KWR11\_PE50



## Two-Tone Marini

Two different coloured yarns give this light fabric its two tone effect making very unusual coloured Marinis.

Beach or Bar; Sport or Spa; Picnic or Party – Suitable wherever you are.

Size 110 x 180 cms (including fringes)







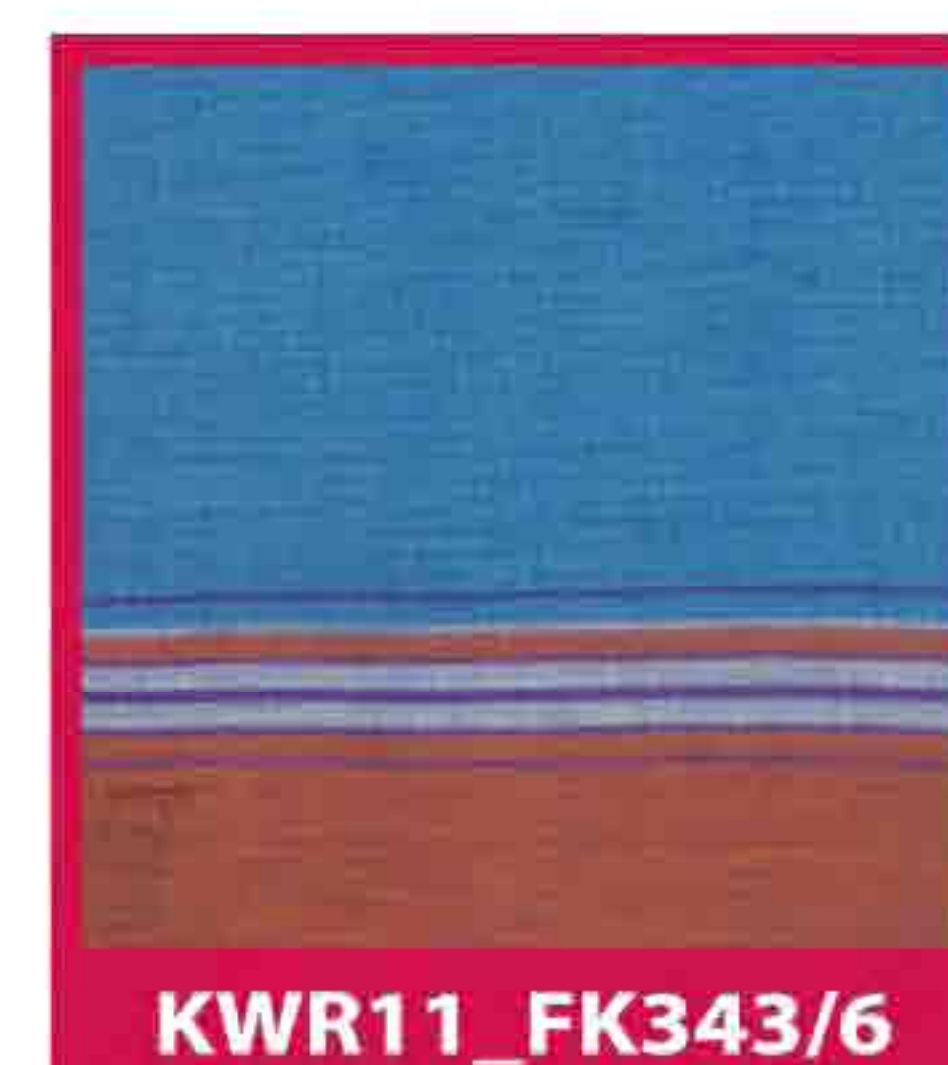
## Marikoy - Kongoni

This exclusive Marikoy is a wonderful fusion between the bestselling classic Kikoy design and the sensual, light-weight Marini fabric. An extensive choice of beautiful colours is offered. Dark or bright yet the colours are not too overwhelming due to the sheerness of the fabric.

*Size 110 x 180 cms (including fringes)*







# MARIKOY KONGONI





## Marini with Clasps

Plain Marinis which are half the size of the normal marinis are "glamorised" with beautiful handcrafted Maasai beaded leather clasps. Worn as a sarong tie, scarp pin or a belt buckle, these clasps are multifunctional and striking.

*Size: 51cm by 155cm (including fringes)*



KWR10\_P51



KWR10\_P14



KWR10\_P47



KWR10\_P27



KWR10\_P40



KWR10\_P4





KWR13\_P22Z



KWR13\_P26L



KWR13\_P39Z



KWR13\_P47L



KWR13\_P23Z



KWR13\_P51L



KWR13\_P31Z



KWR13\_P9L

## Mara Marinis

The elusive leopard and prominent zebras in Kenya's Masai Mara are revealed in this new collection of printed Marinis. These exotic designs with eye-catching colours bring out the passion and energy of the wild.

The leopard design is an all over print whereas the Zebra design is printed on the two ends of the wrap.

*Size 107x 180 cms (including fringes)*





### Kangas

Kangas have been a popular item of clothing in Eastern Africa for over one and a half centuries. Originally made from fabric brought in by the Portugese, the designs were adopted and large rectangular pieces of cloth were printed.

The Swahili name "Kanga" means Guinea Fowl and the new patterns and bright colours of the 'leso' were associated with the plumage of the bird.

The Kanga, a cultural heritage of East Africa is adored by all ages and sexes, generation after generation. Made from 100% cotton, the Kanga is still just as popular. Women are seen in vibrant coloured kangas tied around the waist especially on the Indian Ocean coastline from Lamu to Zanzibar and beyond.

Kasuku Kangas follow the same time-honoured, bold designs with a Swahili Proverb, but with some of the traditional vibrant colours combined with modern shades. The colours of this new collection are inspired by our own brand name - Kasuku (parrot in Swahili). Kasuku Kangas come in a soft, easy to wear fabric with hand-knotted fringes.

Kangas, just like Kikoys are multifunctional – sarong, scarf, sun screen, floor mat, baby carrier, the list goes on.

Kasuku Kangas add a dash of East African spice to plain swimwear or simple clothing.

*Size: 110 x 180 cms (including fringes)*







1. KWR03\_02/09
2. KWR03\_02/12
3. KWR03\_02/11
4. KWR03\_02/10
5. KWR03\_02/08
6. KWR03\_02/14
7. KWR03\_02/15
8. KWR03\_02/07
9. KWR03\_02/13





# STAR KANGAS



1. KWR03\_01/09

3. KWR03\_01/08

5. KWR03\_01/11

2. KWR03\_01/07

4. KWR03\_01/10



**KASUKU**<sup>TM</sup>  
Kanga





1. KWR03\_03/07
2. KWR03\_03/09
3. KWR03\_03/10
4. KWR03\_03/14
5. KWR03\_03/12
6. KWR03\_03/15
7. KWR03\_03/08
8. KWR03\_03/13
9. KWR03\_03/11



# FLOWER KANGAS





## Kasuku Kikoy Towels

Kasuku's best-sellers, the Kikoy Towels, are now available in a much larger colour range and more designs. Convenient and always a necessity at the beach, one side of this towel is a kikoy and the other side is towelling.

Easy to carry in a matching kikoy draw-string bag.

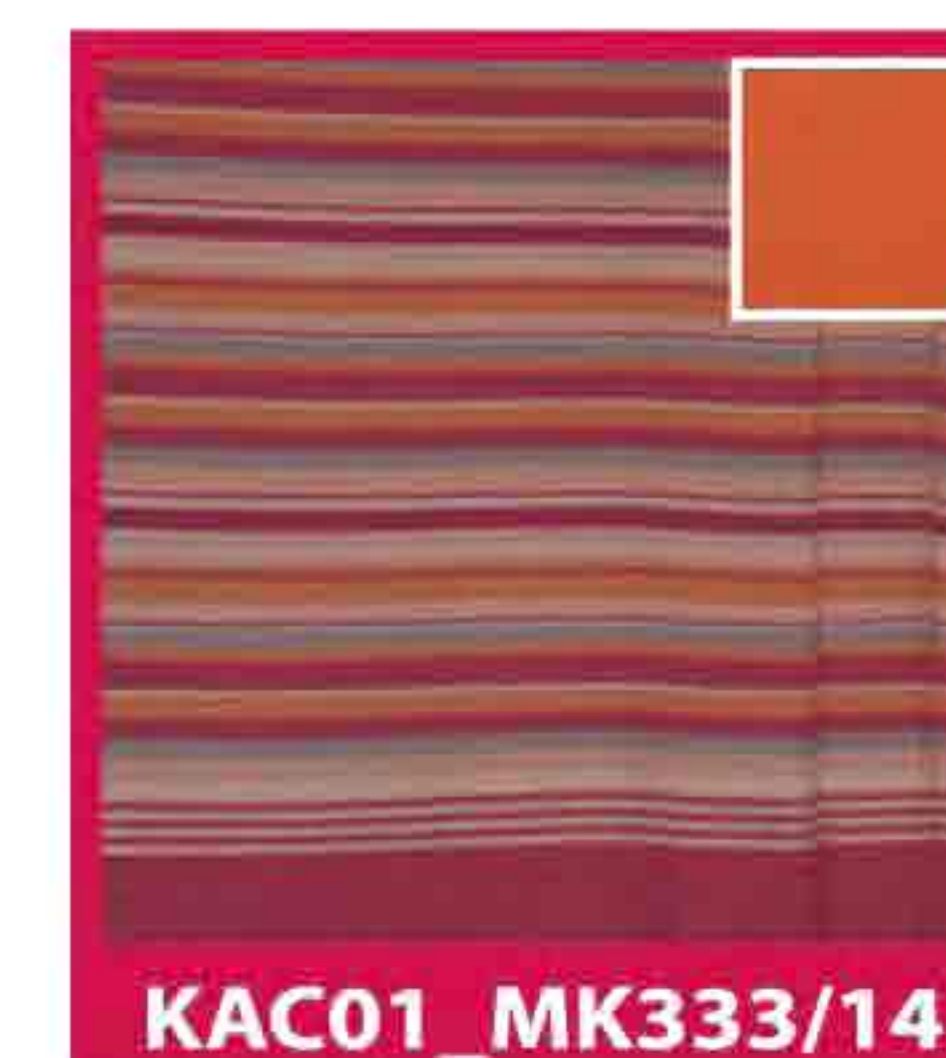
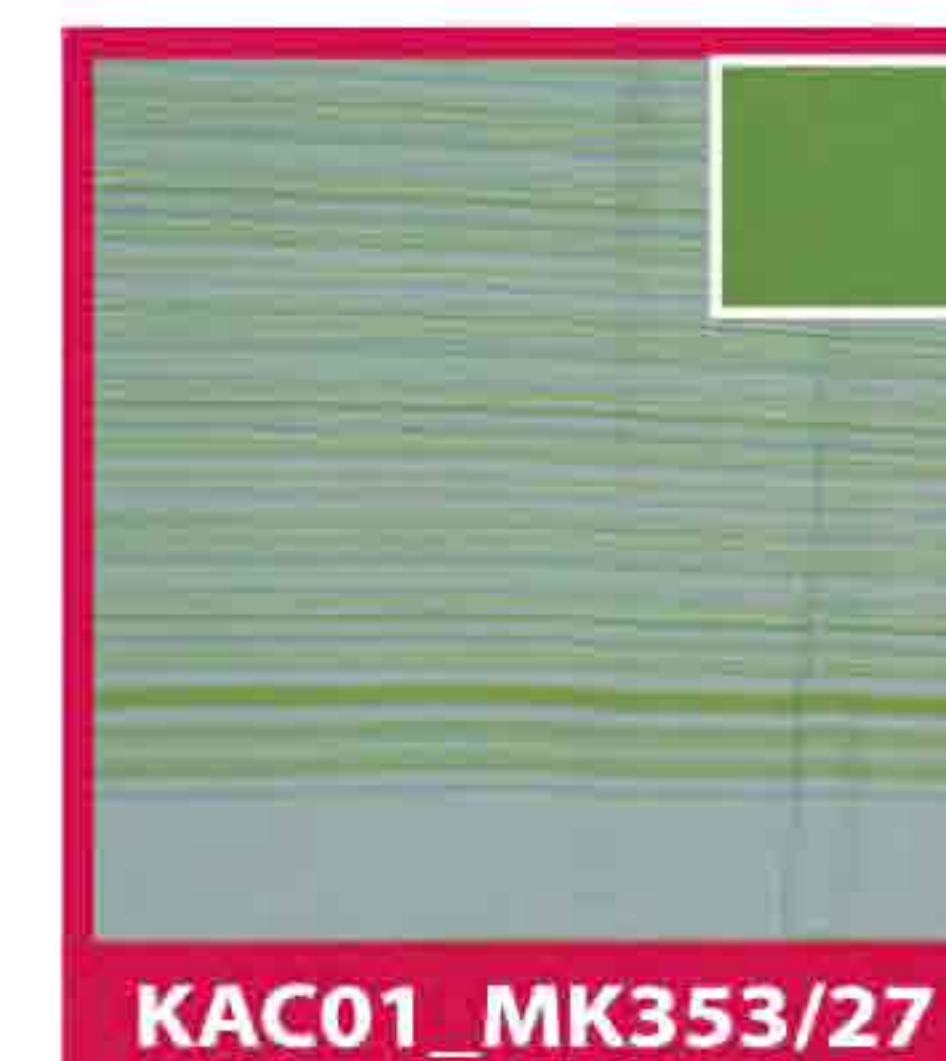
The inset on each kikoy shows the colour of the towelling.

*Size 96cm x 174cm (including fringes)*





# TOWELS - KIKOY







## Kasuku Kanga Towels

New to Kasuku towel range are the Kanga Towels. The tropical designs and colours look great by the beach or poolside.

The inset on each kanga shows the colour of the towelling.

Size 105cm x 180cm



KAC43\_01/01



KAC43\_01/02

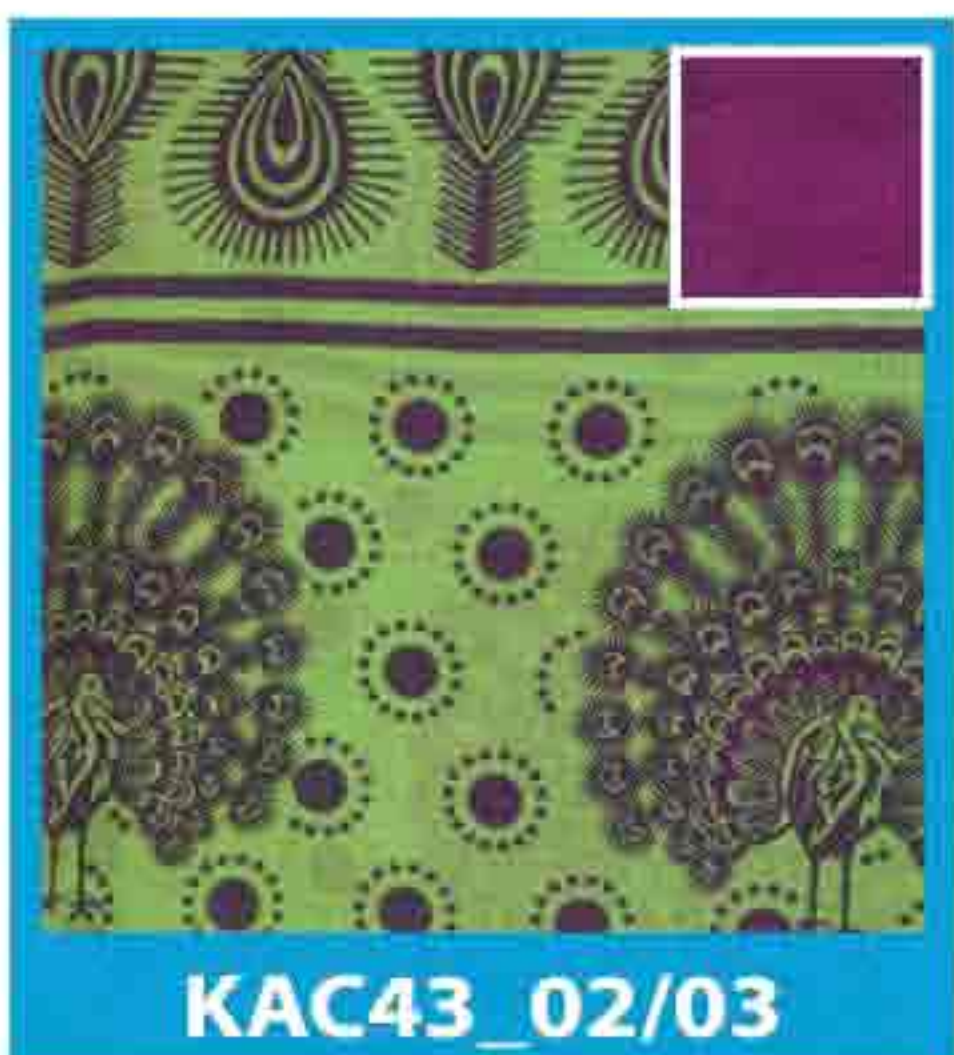
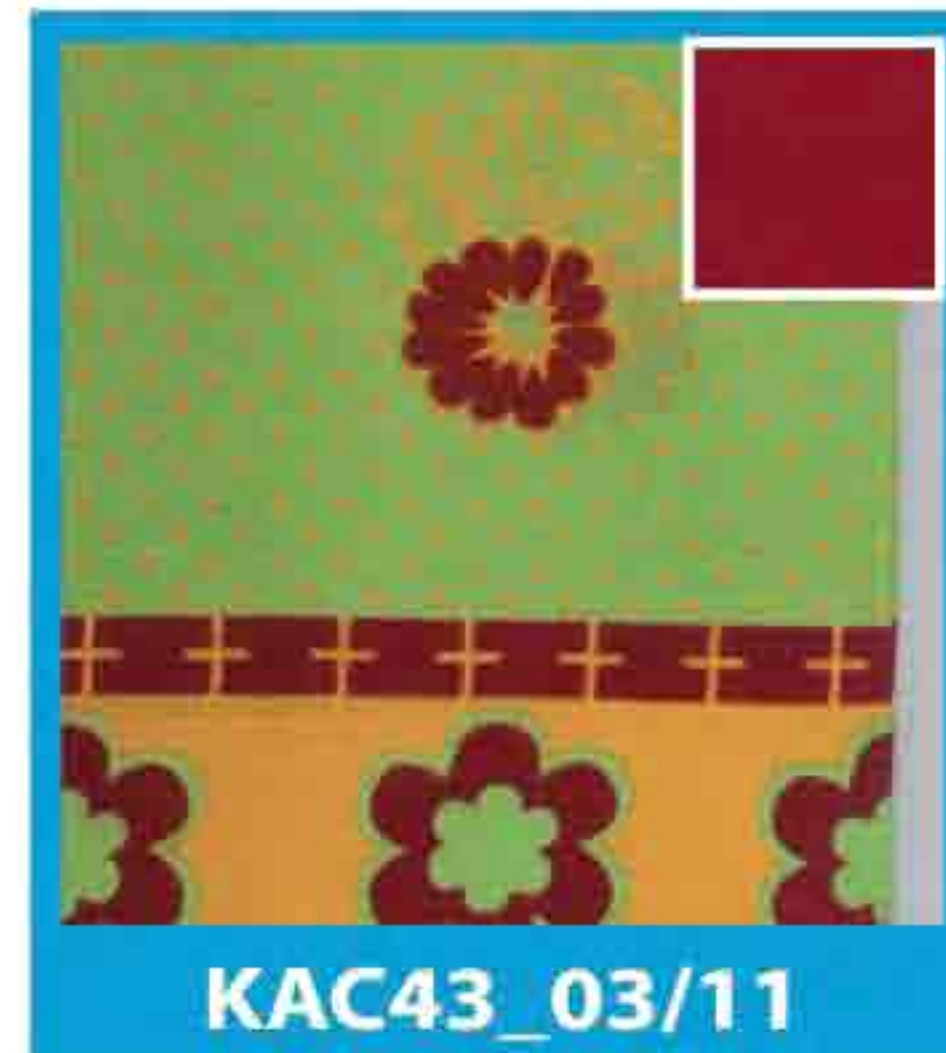


KAC43\_01/07



KAC43\_01/03



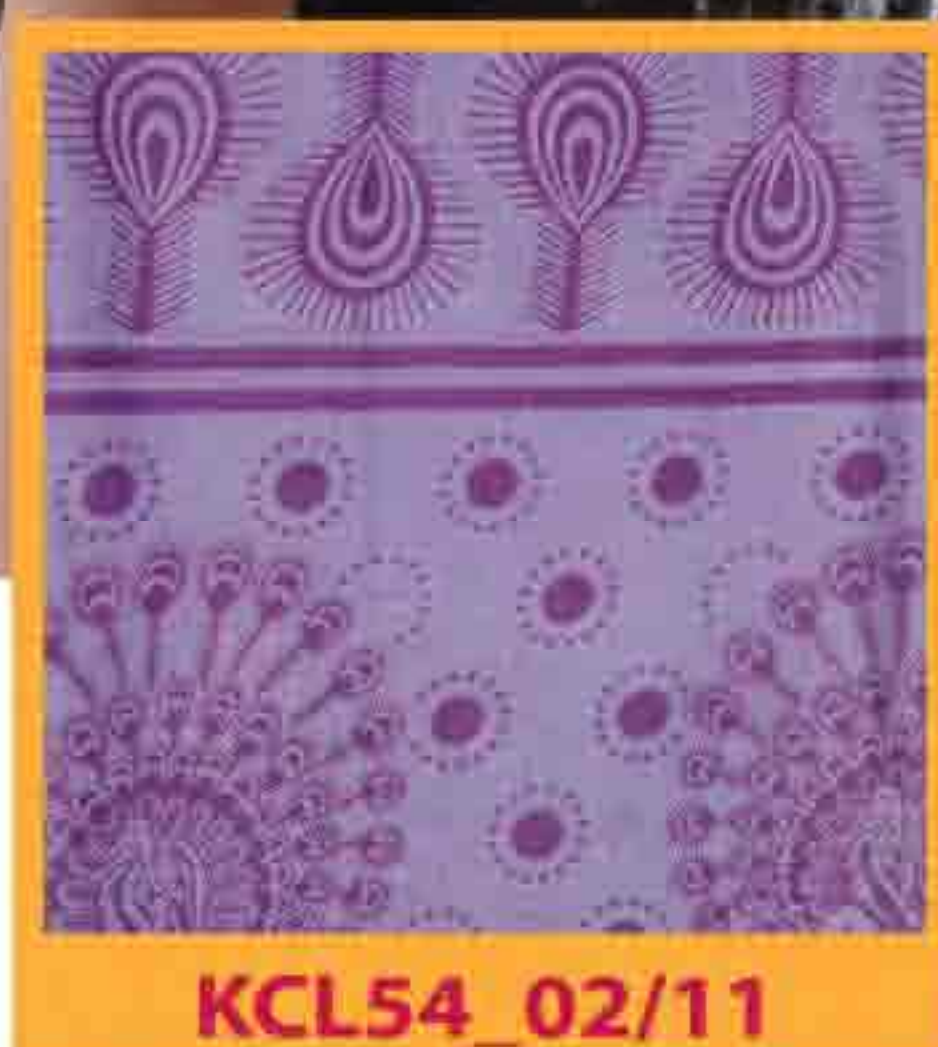
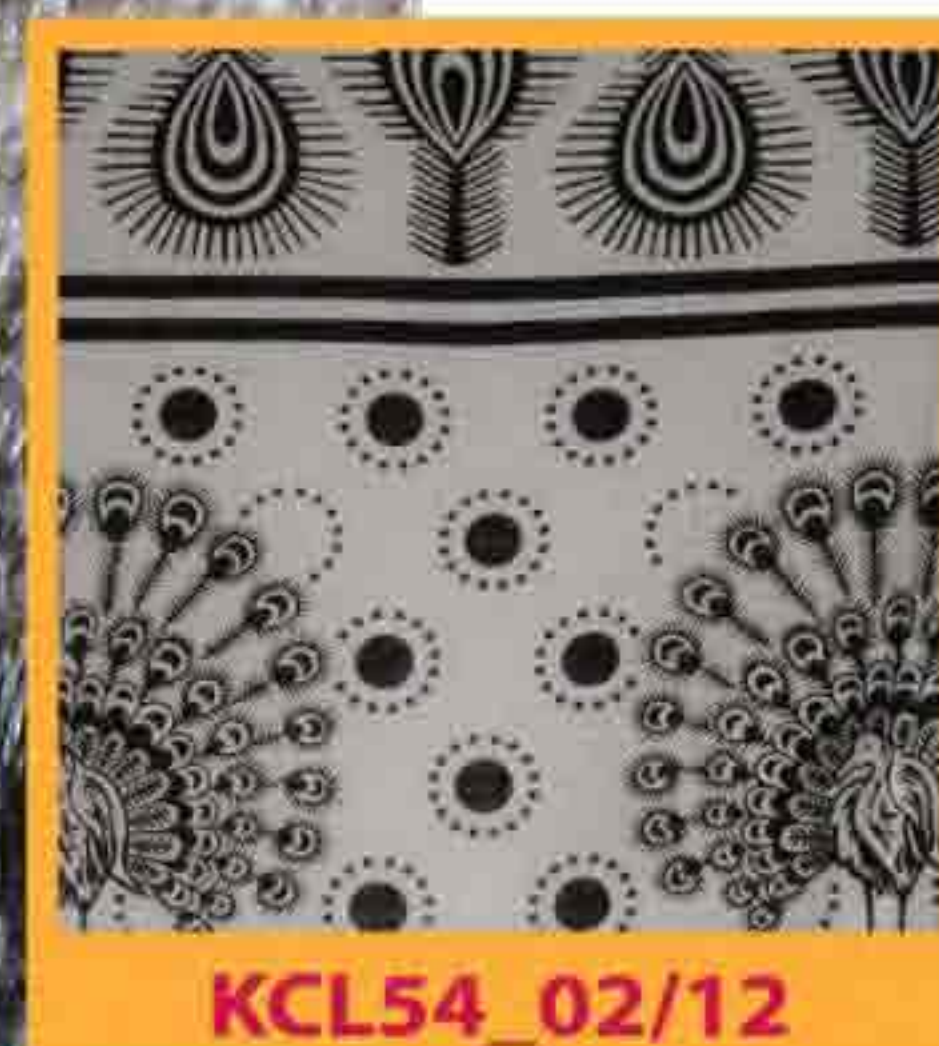
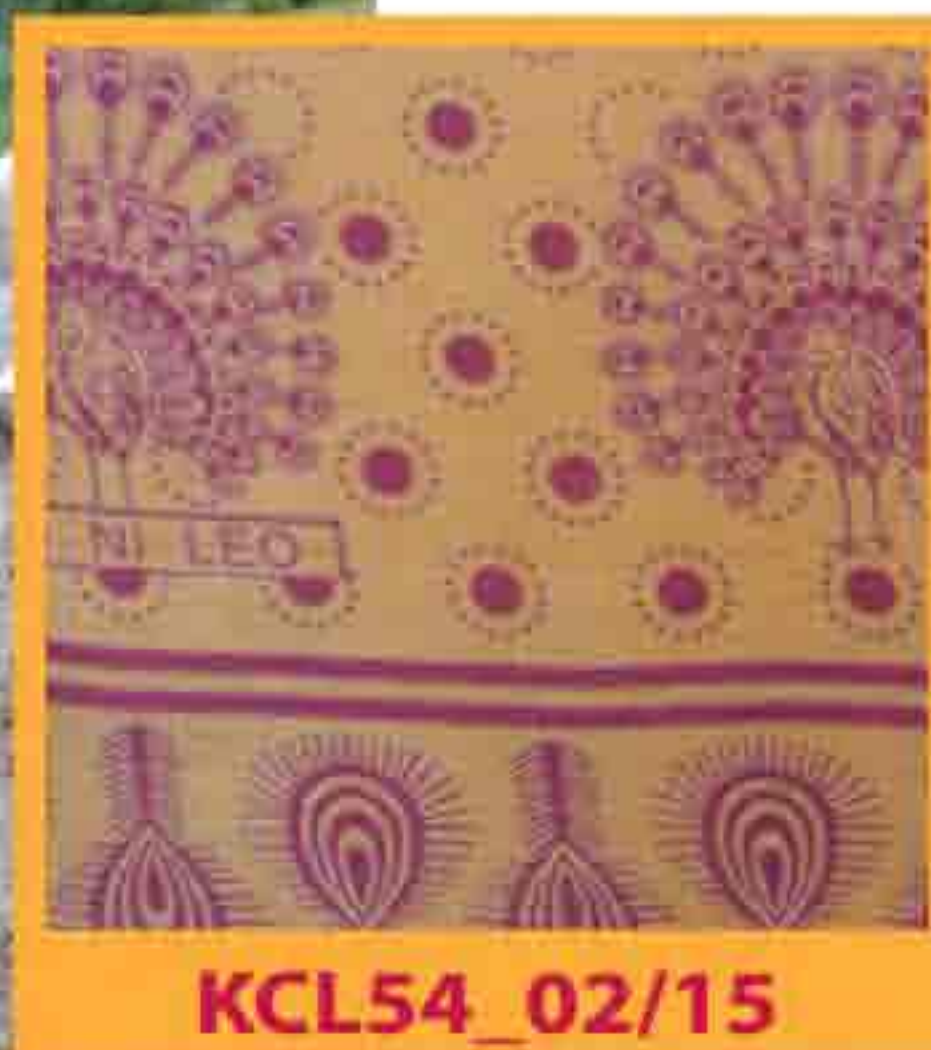


# TOWELS - KANGA





**Kasuku Mrembo Kaftan**  
KCL54\_02/01



## **Kasuku Mrembo Kaftan (left)**

Made from the striking kanga material in the beautiful peacock design, this top has three-quarter length sleeves, great for protection against the sun. It's very cool to wear and is a perfect cover-up after a cooling swim or just as a top over jeans or trousers.

Size: S, M, L, XL.



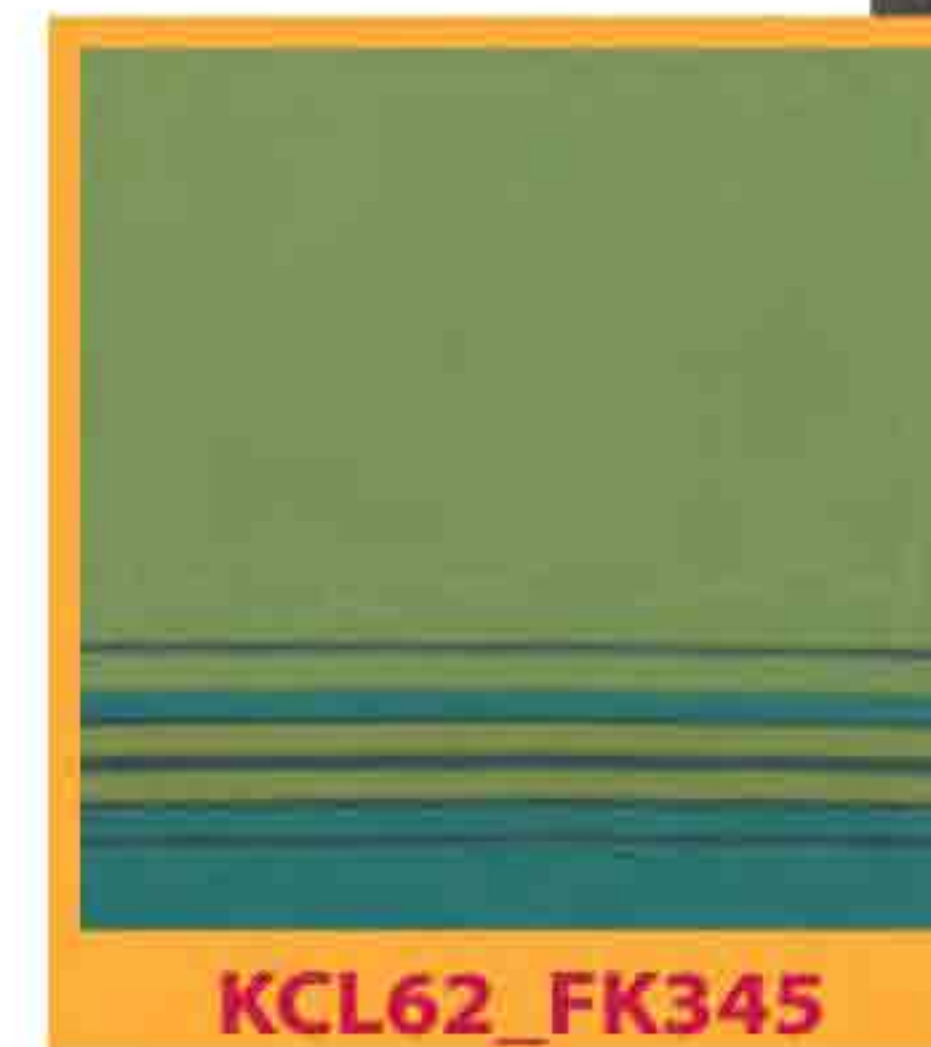
## **Kasuku Kengele Dress-top (right)**

This multi functional top can be worn on top of the bikini, as a dress or with a pair of leggings! Made from the light Marini fabric, this easy to wear dress-top is very feminine, perfect for the hot summers. Bell sleeves give it that special touch. Tied at the back it gives a shapely look and flatters all figures.

Size: S, M, L, XL.



**Kasuku Kengele Dress Top**  
KCL62\_FK343/14







KCL60\_01/06



KCL60\_01/10



KCL60\_01/04



KCL60\_01/08



### Kasuku Johari Dress

A dress made from the printed kanga material with a lovely crochet detail forming the shoulder straps and neckline. Fitted on top and flared at the bottom with an elasticated back for ease of wearing.

Fantastic casual look and exceptionally trendy.

Johari (Swahili for jewels) is portrayed by the necklace image of this beautiful design.

Size: S, M, L, XL.





**Kasuku Mrefu Shirt Dress**  
KCL56\_FK344/25

### **Kasuku Mrefu Shirt Dress (Above)**

A simple design that stays forever yet very chic. The detail of the Marini border falls along the front with buttons running all the way down. With slits on the side and sleeves below the elbow, it looks smart and feels comfortable to wear. A perfect length to wear as a dress on its own or with jeans, leggings or even trousers. Try it with a belt for a more fitted look. Sizes: S, M, L, XL.



KCL56\_FK236/6



KCL56\_FK238



KCL56\_FK342/2



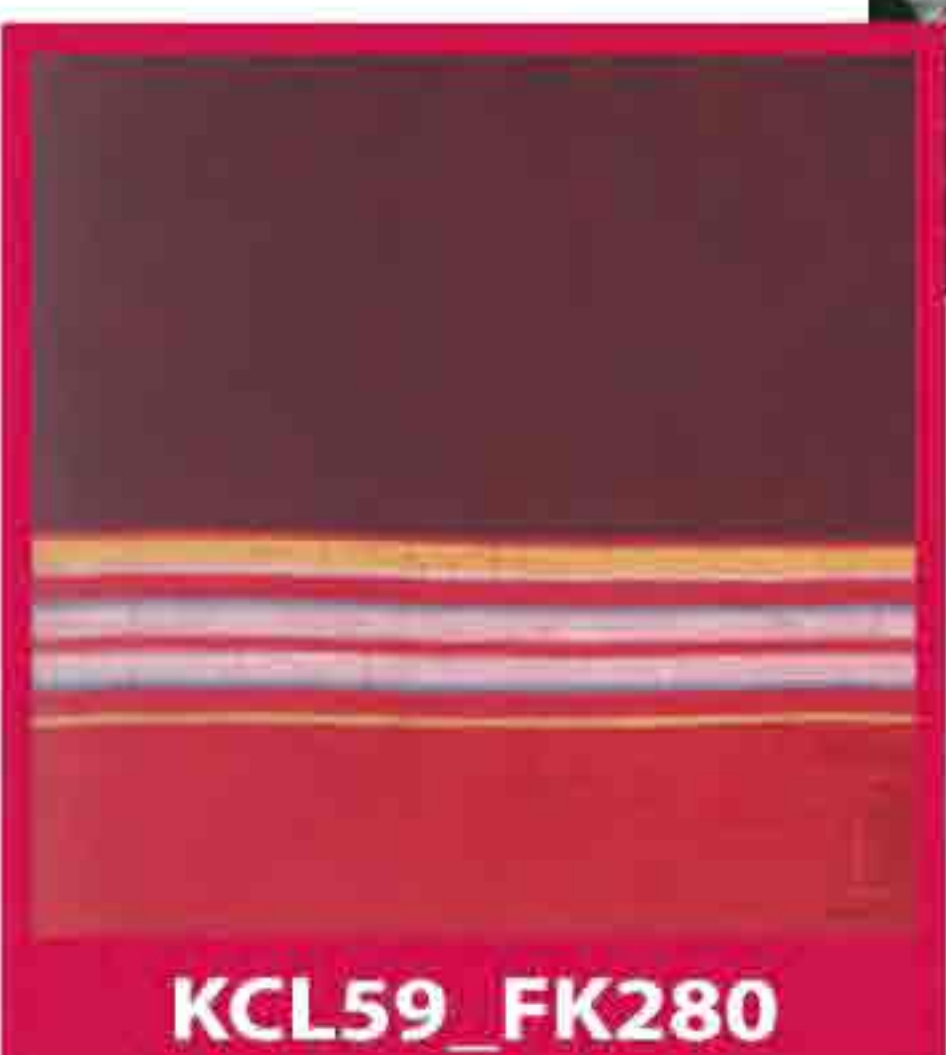
KCL59\_FK231



KCL59\_FK243



KCL59\_FK346/13



KCL59\_FK280



### **Kasuku Karibu Kaftan (Above)**

Sometimes less is more! Feel sexy and comfortable in this simple V neck kaftan made from the light Marini fabric. The soft material drapes easily and feels cool against the skin. Perfect for covering up against the sun, on the beach, by the pool and even at home. Simple yet elegant. Who needs more. Sizes: S, M, L, XL.





**Kasuku Salama Skirt**  
KCL61\_02/02



**Kasuku Furaha Skirt**  
KCL52\_03/04

### **Kasuku Salama Skirt (Above)**

Cool, hip and casual. This rah-rah skirt can be worn with a bikini or swimsuit or even with a t-shirt. The length can be adjusted by folding or unfolding the contrasting colour waistband.

Size: One Size, fits S, M, L.



### **Kasuku Furaha Skirt (Above)**

'Flowy', light, breezy and soft against the skin. This skirt made from Kasuku's floral kanga fabric is all about personal comfort. Uneven edges give a sexy and alluring look. The flexible waist band can be folded to adjust the length. Or try wearing it as a strapless dress. Looks great! Size: One Size, fits S, M, L





**Kasuku Twende Culottes**  
KCL50\_FK339/14



KCL50\_FK232/14



KCL50\_FK283



KCL50\_FK243

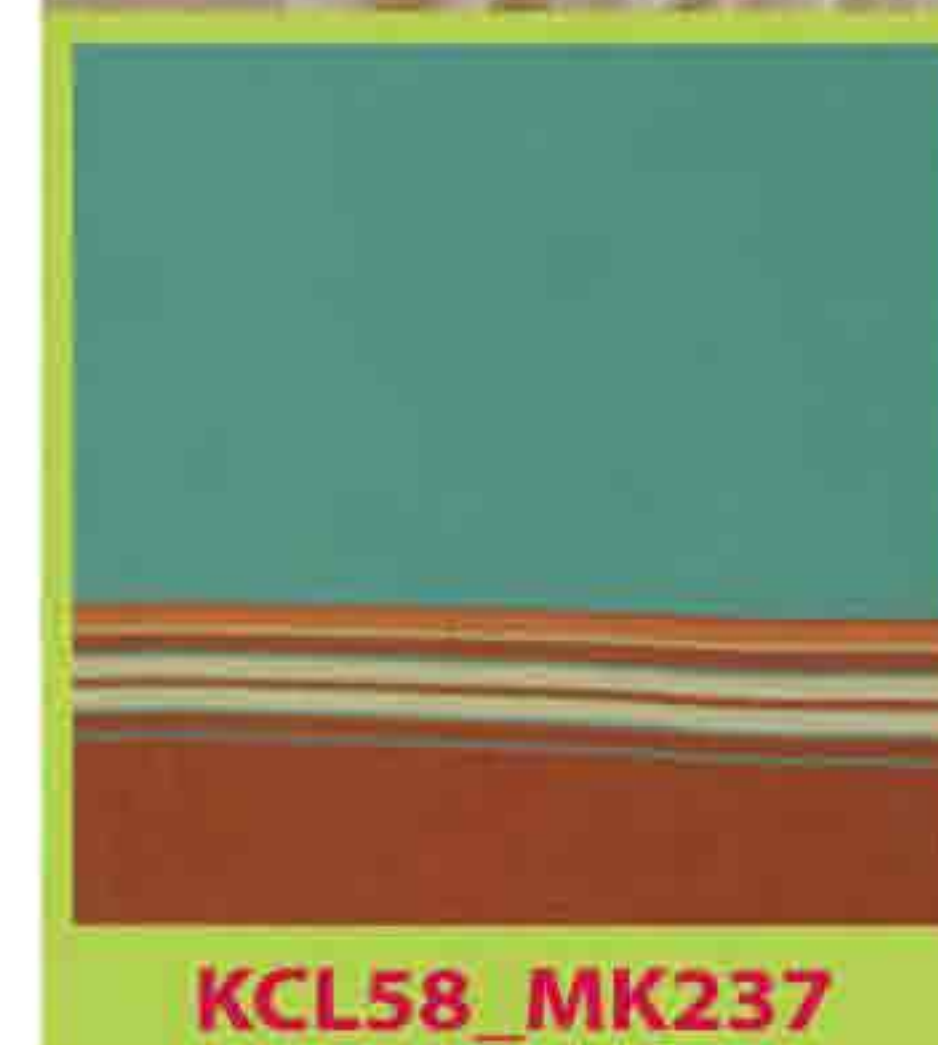
## **Kasuku Twende Culottes (above)**

Made from the fine Marini fabric, these casual cool culottes, offer utmost comfort. With slits on the side and an elasticated waist, they are airy and easy to slip on.

Size S, M, L, XL.



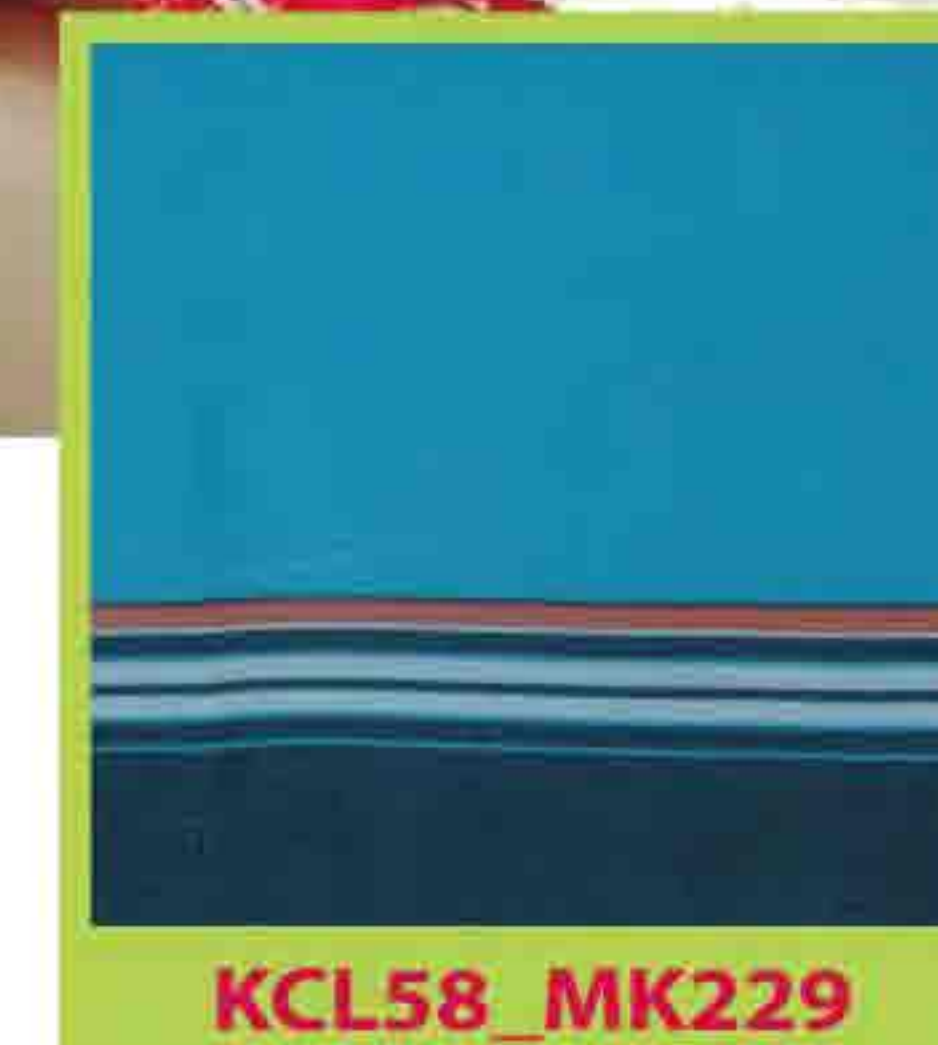
**Kasuku Maisha Dress**  
KCL58\_MK234



KCL58\_MK237



KCL58\_MK243



KCL58\_MK229

## **Kasuku Maisha Dress (above)**

Easy to wear and great to just slip on over swimwear or on its own. Ideal for those lazy times when comfort is the key aspect of the day. Offered in charming bright colours to lighten up the mood.

An intricate embroidered neckline gives this dress an extra dimension.

Size: One Size fits: M, L, XL.



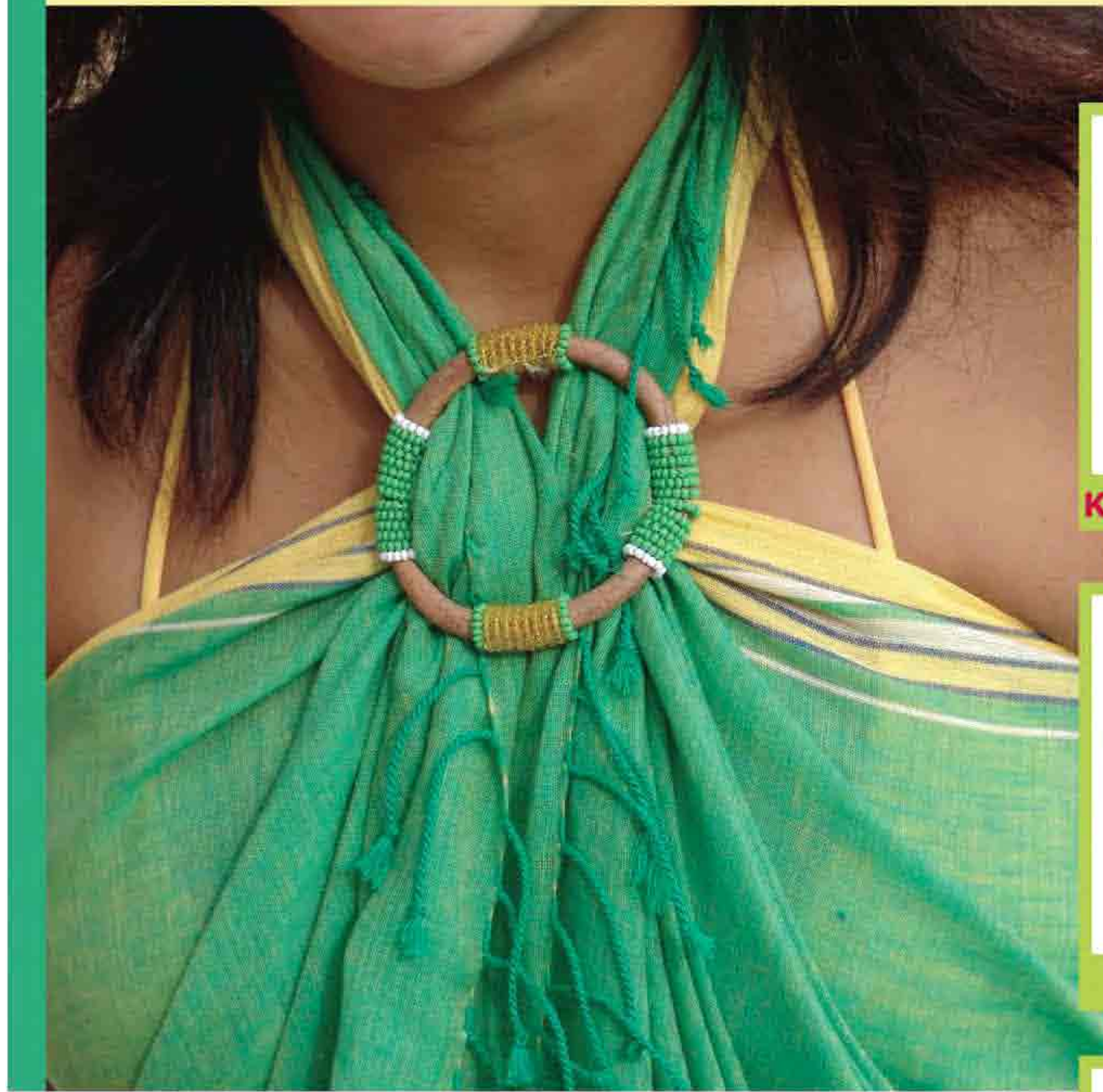
KCL58\_MK358/3



KCL58\_MK247



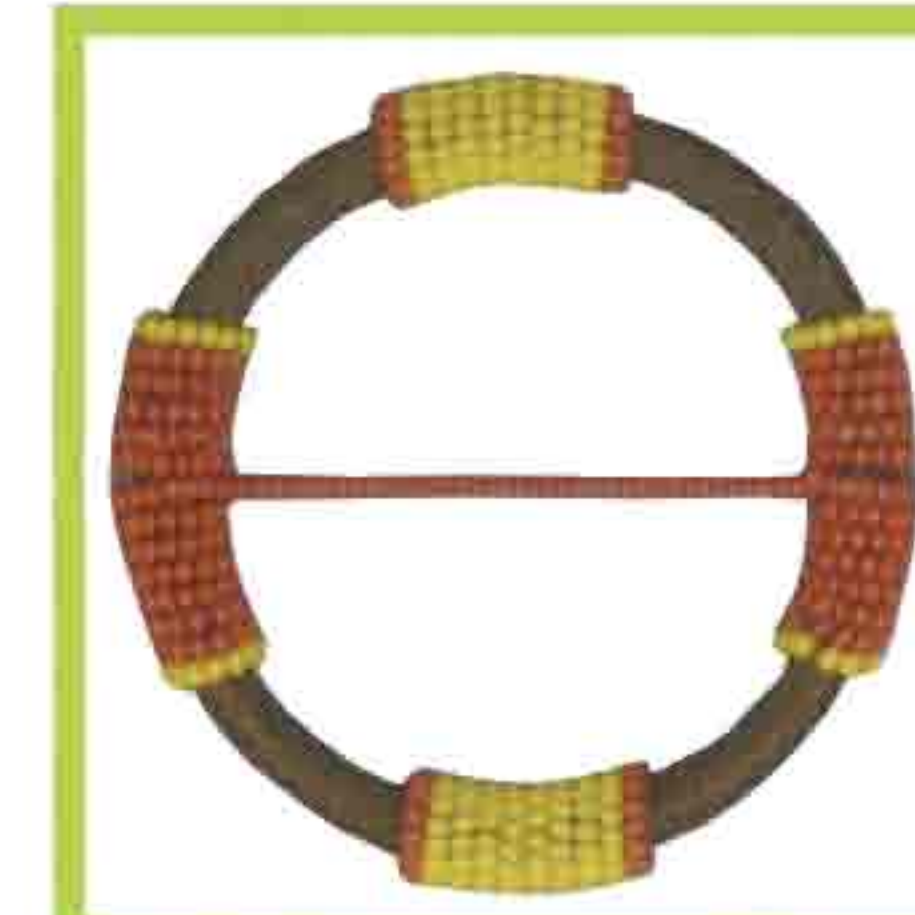




KFA13\_Green/Yellow



KFA13\_Orange/Red



KFA13\_Orange/Yellow



KFA13\_Pink/Blue



KFA13\_Pink/Lilac



KFA13\_Pink/White



KFA13\_White/Silver



### Kasuku Beaded Leather Sarong Clasps

Kikoy, Marini or Kanga, they all look very chic when tied with a Kasuku Clasp.

These hand-made clasps are made from real leather and embroidered with Masaai beads. They are stylish and remarkably multi-functional. Use them as a sarong tie, belt buckle, accessory or a scarf clasp.

Diameter: 6.5cm

# CLASPS





**Kasuku Mrefu Shirt dress**  
KCL56\_FK303



**KFA13\_Brown**

**Kasuku Beaded Leather  
Sarong Clasp**

## Safari Collection

"Safari Njema na Kasuku"  
- Travel well with Kasuku.  
The colours in this collection  
are typical and traditional  
Safari shades. The browns,  
ecrus, khaki's are presented  
in the wraps (sarongs),  
towels and clothing. They  
work well when travelling  
or to accentuate any casual  
outfit.



**KAC01\_MK356/28**



**KAC43\_01/09**

**Towels Kikoy <sup>(1)</sup> and Kanga <sup>(2)</sup>**



**Kasuku Karibu Kaftan**

**KCL59\_FK304**



# SAFARI COLLECTION



KWR11\_FK303



KWR11\_FK305

Marikoy Kongoni

MARIKOY  
WRAPS



KWR11\_fk335/23

Marikoy Kongoni



KWR01\_MKS306



KWR01\_MKS307

Kikoy Kifaru

KIKOY  
WRAPS



KWR01\_MKS303



KWR01\_MKS305

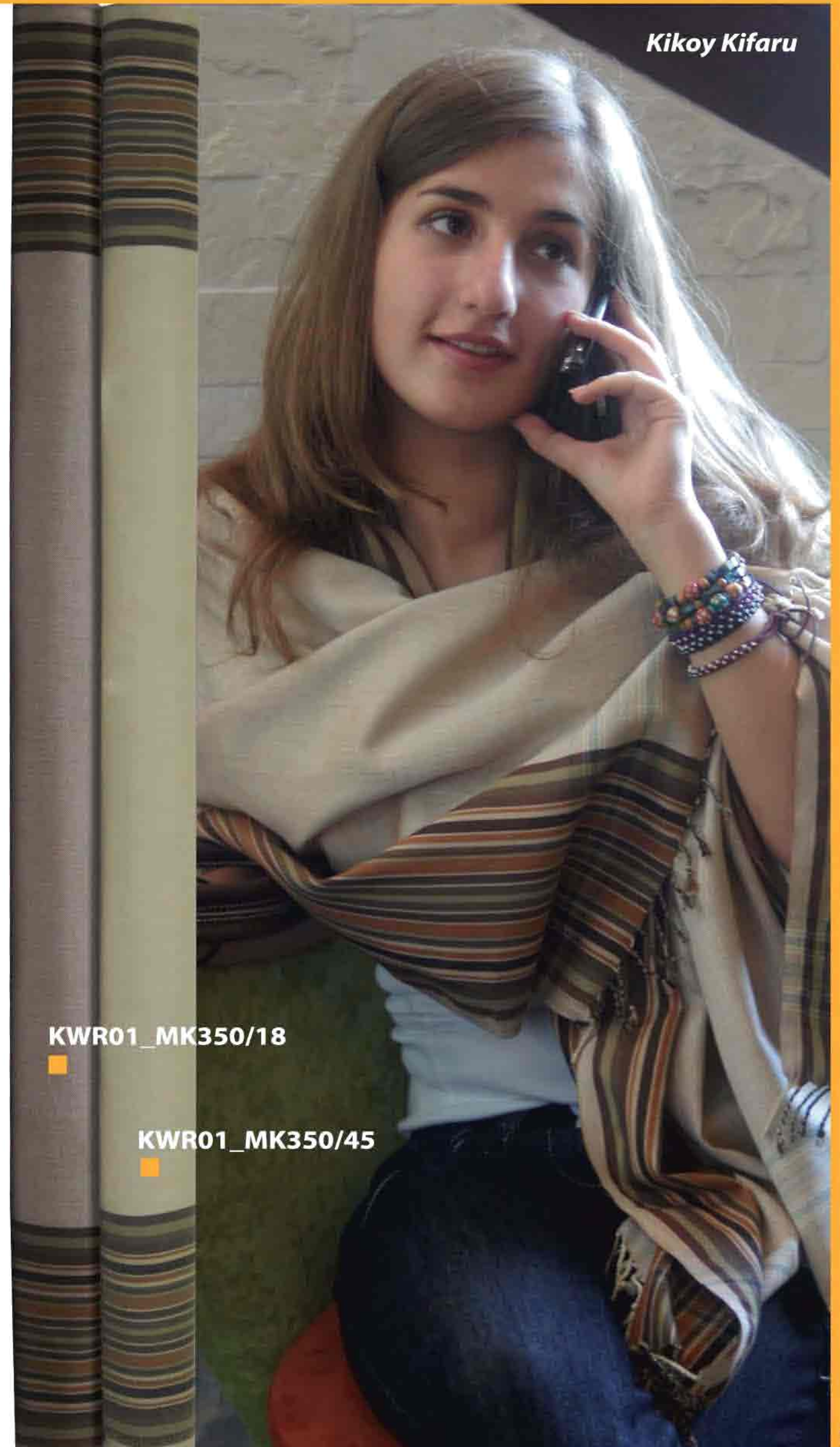


KWR01\_MK356/28

Kikoy Ndovu



KWR01\_MK356/17



Kikoy Kifaru

KWR01\_MK350/18

KWR01\_MK350/45



**BUYING INFORMATION**

For details on how to place an order with Kasuku refer to the enclosed order form or email [info@kasuku.co.uk](mailto:info@kasuku.co.uk)

To order by phone, call +44 (0) 7989-431025 or +44 (0) 208 090 9328.  
If you are in Africa call +254 (0)20-3594711/2/3/4  
Mobile: +254-(0)722-760063 or +254-(0)733-771829

For orders by fax, fill in the order form with the necessary information and your credit card details and fax to:

+44 (0) 8701306720

or

+254-(0)20-3594710 if in Africa

For all wholesale enquires refer to

**[www.kasuku.co.uk](http://www.kasuku.co.uk)**

or contact us at [info@kasuku.co.uk](mailto:info@kasuku.co.uk)

or +44 (0) 208 090 9328.

**RETURNS**

We are sure you will be completely satisfied with your purchase. However, if you have any doubts, you can return any new products in the original packing within 14 days.

**CONTACT US**

We do welcome your suggestions and invite you to write to us with comments and advice on our products.

Email: [info@kasuku.co.uk](mailto:info@kasuku.co.uk)

or mail to

33 The Pines

Chase Road, Oakwood

London N14 4EX

U.K

**CUSTOMISED ORDERS**

Whilst Kasuku has its own line of clothing and accessories, our large Kenyan workshop can undertake customised orders for certain quantities.

Since we weave our own fabric, we can make kikoyis in corporate colours or colours to match the theme of hotel rooms.

Call us or email to check on the various possibilities.

**WASHING INSTRUCTIONS**

Kasuku Kikoyis get better and better with washing and wearing.

Though mercerised cotton Kikoyis are strong and colour fast, it is recommended to wash at 40°C and DO NOT tumble dry or bleach.

Like all cottons, it is advisable to wash separately the first time.

Set iron on cotton and use steam.

Kasuku Marinis are also made from 100% cotton and the same washing instructions apply as for kikoyis. Since the fabric is very fine, it is advisable to handle them with a little extra care.

Every reasonable care has been taken to ensure that the descriptions and colours are accurate. However a certain colours due to the two-tone effect may have a slight variance. Hand-dyed products and certain beads could have a small colour difference due to the purely manual process.

Kasuku Woman	Small	Medium	Large	X-Large	Kasuku Woman	Small	Medium	Large	X-Large
UK	8 / 10	12 / 14	14 / 16	18 / 20	To fit bust: inches cm	32 - 34.5 82 - 88	35 - 37 89 - 94	37 - 40 94 - 102	40 - 43 102 - 110
EUROPE	34 / 36	38 / 40	40 / 42	44 / 46	To fit waist: inches cm	25.5 - 27.5 65 - 70	28 - 30 71 - 76	30 - 33 76 - 84	34 - 36.5 76 - 93
US	4 / 6	8 / 10	10 / 12	14 / 16	To fit hips: inches cm	34 - 37 86 - 94	38 - 39.5 96 - 101	40 - 42 102 - 107	43 - 46 109 - 117





# KASUKU COLLECTION





## Kasuku in Uk

Kasuku (U.K) Ltd  
33 The Pines  
Chase Road, Oakwood  
London N14 4EX  
United Kingdom

Email: [info@kasuku.co.uk](mailto:info@kasuku.co.uk)

Mobile: +44 (0) 7989-431025

Phone: +44 (0) 208 090 9328

Fax: +44 (0) 870-1306720

[www.kasuku.co.uk](http://www.kasuku.co.uk)

## Kasuku in Kenya

Email: [info@kasuku.co.uk](mailto:info@kasuku.co.uk)

Tel: +254 (0)20-3594711/2/3/4

Fax : +254-(0)20-3594710

Mobile: +254-(0)722-760063

+254-(0)733-771829

